

EVE

— MP5 —



USER MANUAL

— OVERVIEW —◆

Introducing the newest addition to the *Extensive Vintage Equalizer* family from Kuassa: **EVE-MP5**.

Kuassa EVE-MP5 is a reproduction of two of the most sought-after classic hardware equalizers, the Pultec* *MEQ-5 Midrange Equalizer* and the *EQP-1A Program Equalizer*. We drew inspiration from them and combined both EQs into a compact 3U device with a color coded, straightforward interface intended for fast workflows and maximum usability.

Known for their signature frequency curves, the EVE-MP5 will bring massive lows, smooth mids and shiny highs to any tracks you put them into. Utilize the famous low-end trick of boosting and attenuating the low frequencies simultaneously for a rock solid bottom-end. The MP5 is also loaded with a power amp saturation unit in the signal path. Turn it on for a hotter signal and dial the input to give a mild edge to your tracks, or push more for an overdriven sound. The "*Auto*" switch in the input section is useful for maintaining constant gain levels while cranking the saturation via the input knob.

Features:

- Combination of the two Pultec* EQs into a compact 3U device.
- Color coded knobs and straightforward interface for fast workflows.
- Special Saturation unit on the input path with automatic level compensation.
- Simultaneously boost and attenuate on the same low frequency.
- Distinct Pultec* natural filter curve.
- Dial up large amount of boost or cut without sacrificing naturalness and musicality.

**Disclaimer: All trademarks are the property of their respective owners which are in no way associated or affiliated with Kuassa. The manufacturer names and model designations are used solely to identify the products whose tonal and sound characteristics were studied during development.*

← SYSTEM REQUIREMENTS —————→

Windows:

Windows XP or Later (32/64 bit)

Intel Pentium 4, or AMD Athlon XP or better (Core2 Duo, Athlon64, or better is recommended) with 512MB minimum RAM
VST/VST3/AAX compatible host/sequencer, Pro Tools 10 or Propellerhead Reason 6.5 or later*

Macintosh:

Mac OSX 10.5 or later (32/64 bit)

Intel Pentium 4, or AMD Athlon XP or better (Core2 Duo or Athlon64 recommended) with 512MB minimum RAM
VST/VST3/AU/AAX compatible host/sequencer, Pro Tools 10 or later or Propellerhead Reason 6.5 or later*





VST, VST3, AU and AAX Versions



◀ INSTALLATION ▶

Mac OSX 10.5 or later

Note for MacOS X users: you must be logged in to a user account with administration privileges to run the installer.

1. For Mac installer(.dmg) format, double-click the installer and follow the instructions. The installer automatically point to your Mac's default VST/VST3/AU/AAX plug-ins path (see below). Alternatively you can customize the installation target to specific folder.
2. Here is the list of default folder installation path for each of our supported platforms in Mac OSX:
 - **Mac Audio Unit** (EVE-MP5.component) : Library/Audio/Plug-Ins/Components
 - **Mac VST** (EVE-MP5.vst) : Library/Audio/Plug-Ins/VST/Kuassa
 - **Mac VST3** (EVE-MP5.vst3) : Library/Audio/Plug-Ins/VST3
 - **Mac AAX** (EVE-MP5.aaxplugin) : Library/Application Support/Avid/Audio/Plug-Ins

Windows XP or later

Note for Windows Vista, 7, or later: We recommend installation with Administrator rights using “Run as Administrator” for both Kuassa Installer and Sequencer/Host installer.

1. For Windows Installer (.exe), double-click the installer and follow the instructions. The installer automatically point to your system's default plugins path (see below). Alternatively you can point the installation target to specific folder. Most VST host already have a “Plugins” or “VSTplugins” folder inside it's installation directory, or you can point the host to read any folder you choose.
2. Here is the list of default folder installation path for each of our supported platforms:
 - **Windows 32-bit VST** (EVE-MP5.dll) : C:\Program Files\Steinberg (x86)\VstPlugins\Kuassa
 - **Windows 64-bit VST** (EVE-MP5.dll) : C:\Program Files\Steinberg\VstPlugins\Kuassa
 - **Windows 32-bit VST3** (EVE-MP5.vst3) : C:\Program Files (x86)\Common Files\VST3\Kuassa
 - **Windows 64-bit VST3** (EVE-MP5.vst3) : C:\Program Files\Common Files\VST3\Kuassa
 - **Windows 32-bit AAX** (EVE-MP5.aaxplugin) : C:\Program Files (x86)\Common Files\Avid\Audio\Plug-Ins
 - **Windows 64-bit AAX** (EVE-MP5.aaxplugin) : C:\Program Files\Common Files\Avid\Audio\Plug-Ins

◆ — UNINSTALLATION — ◆

Mac OSX 10.5 or later

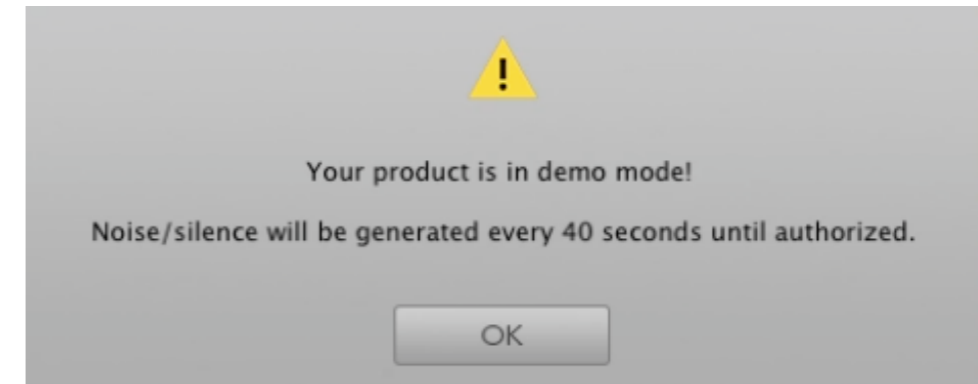
To uninstall from OS X, simply delete the plug-in located on the Plug-ins folder, and delete other file resources located at: */Users/[YourName]/Music/Audio Music Apps/Kuassa*

Windows XP or Later

Use “Add/Remove programs” or “*Programs and Features*” from the Windows Control Panel. If EVE-MP5 does not listed, delete the .dll file from your VST plug-in folder. And other EVE-MP5 file resources at *~\Documents\Kuassa**

AUTHORIZATION

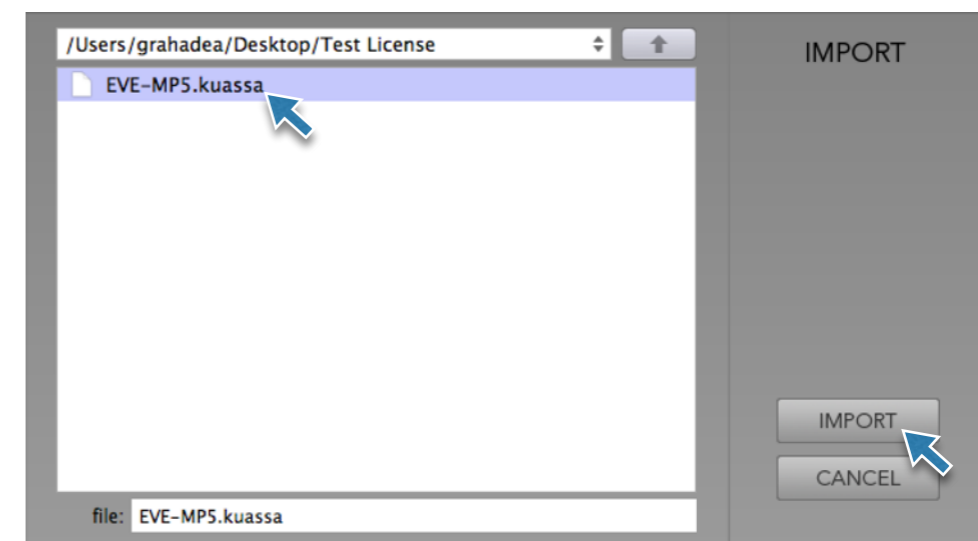
1. On evaluation mode, you will see this pop-up window when you first start the plugin



2. To start the authorization process, click the **[File]** button on the top-left of the plug-in's Interface, there, you will find a selection box titled **[import License]**.

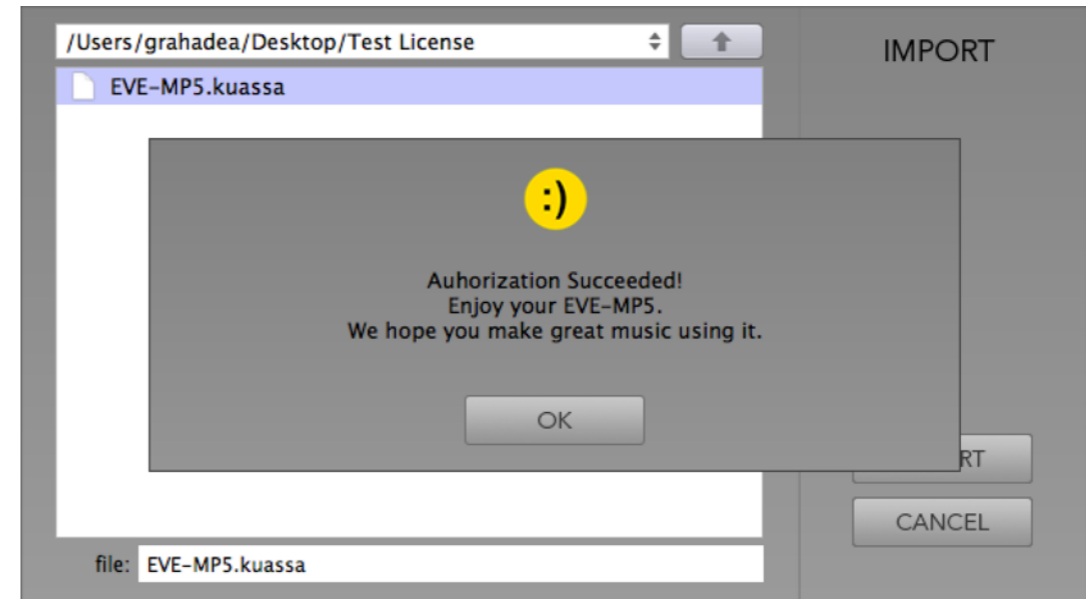


3. Locate the *License File* **[EVE-MP5.kuassa]** obtained from the confirmation e-mail sent to you after you purchase EVE-MP5 Series EQ(s) from our web store. Note that the *License File* contains your personal information used to authorize the plug-in.

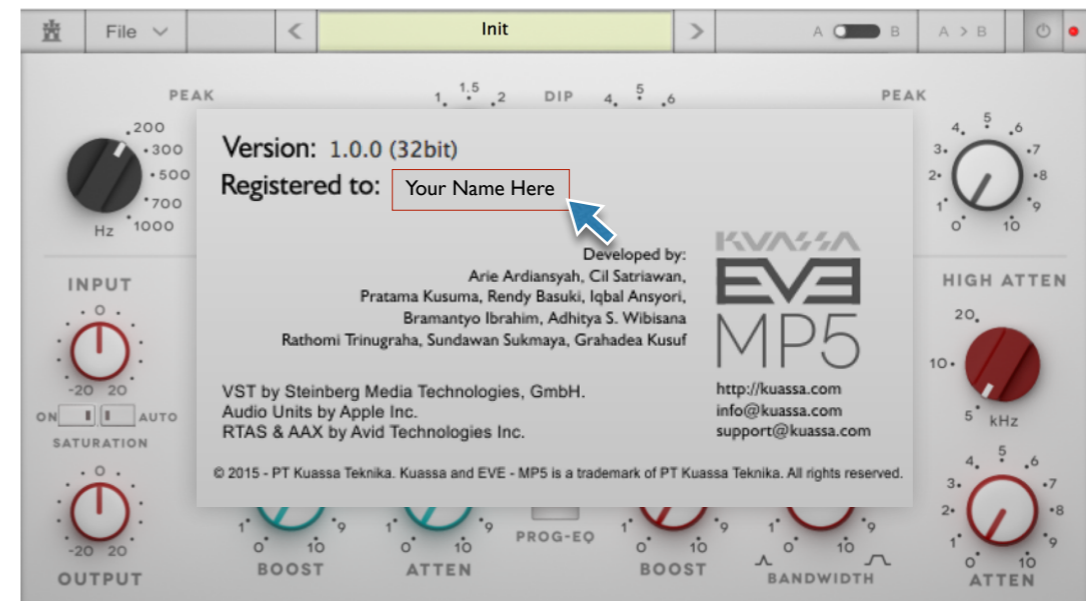


AUTHORIZATION (Cont'd)

4. After you locate the *License File*, a pop-up box confirming that you have successfully authorized your plug-in will show.



5. To check if you have completed the authorization process, simply load the *About Box* by clicking the Kuassa castle logo on the top-left corner. If your authorization was successful, either your name or your e-mail address will be shown on the *About Box*. You will also notice that the generated noise/silence on the Evaluation Version is now gone.



6. That's it! Enjoy your copy of EVE-MP5 Equalizer, Cheers :)

FUNCTIONS: EVE-MP5



SECTION 1: GENERAL

1. **Kuassa "Castle" Logo:** Click to show the *About Box*
2. **[File] button:** The Menu button contains several functions; preset saving, license file authorization, and shortcuts to the user manual and Kuassa website.
3. **Preset Selector:** Select from available *Presets*, press left-right buttons or select from drop down menu
4. **A-B Compare:** Compare two different settings of the EQ
5. **Copy A to B:** Copy settings from the "A" state to "B" state
6. **EQ Power Button:** Turns the EQ on or off.
7. **Input:** Sets the input level of the device. When "Auto Switch"(10) is turned on, it will control the saturation amount with level automatically maintained.
8. **Output Trim:** Increase or decrease the track output volume after equalization
9. **Saturation On/Off Switch:** Activate the modeled power amp saturation
10. **Auto Switch:** Activate the automatic level compensation for maintaining constant level in relation with input.
11. **Phase button:** Click to flip the phase of the output 180 degrees

SECTION 2: MIDRANGE EQ

12. **Mid-EQ Switch:** Enable or Disable the whole MID-EQ Section
13. **Peak(200-1000Hz):** Select frequency (*Hz*) and turn up to *boost* the selected frequency.
14. **Dip(0.2-7kHz):** Select frequency (*Hz*) and turn up to *cut/attenuate* the selected frequency.
15. **Peak (1.5-5kHz):** Select frequency (*Hz*) and turn up to *boost* the selected frequency.

SECTION 3: PROGRAM EQ

16. **Prog-EQ Switch:** Enable or Disable the whole PROG-EQ section
17. **Low:** Select frequency (*Hz*) to be modified, and turn up the *Boost* knob to boost selected frequency or *Atten* knob to attenuate/cut the selected frequency. While *Boost* and *Atten* can be applied separately, they can be combined to achieve a unique frequency response widely known as the *Pultec Low End Trick*.
18. **High Boost:** Select desired frequency and turn the *Boost* knob to boost the selected frequency. You can change the width / Q value of the corresponding frequency by turning *Bandwidth* knob clockwise for broader Q value
19. **High Atten:** Select desired frequency, and turn the *Atten* knob to cut the selected frequency.

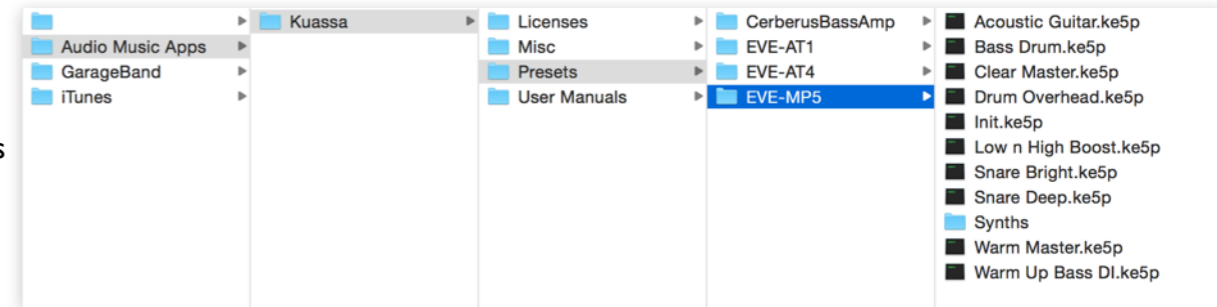
← PRESET MANAGEMENT (1/2) →

A new preset management system based on a folders/sub-folders hierarchy has been implemented, hereby replacing the banks system of previous Kuassa products.

1. Presets for EVE-MP5 are located in the following folders*:

- **Mac:** *Users/[YourName]/Music/Audio Music Apps/Kuassa/Presets/EVE-MP5*
- **Win:** *~\Documents\Kuassa\Presets\EVE-MP5*

All presets inside these folders will be recognized by the plugin as individual presets, and sub-folders will be recognized as banks. They will thus be shown on the EVE-MP5's preset selector.



2. To save a preset, set your plugin to the desired parameter settings, then select:

- “Save Preset”: Overwrites currently active preset.
- “Save Preset As”: Saves current settings into a new preset file (.ke5p).



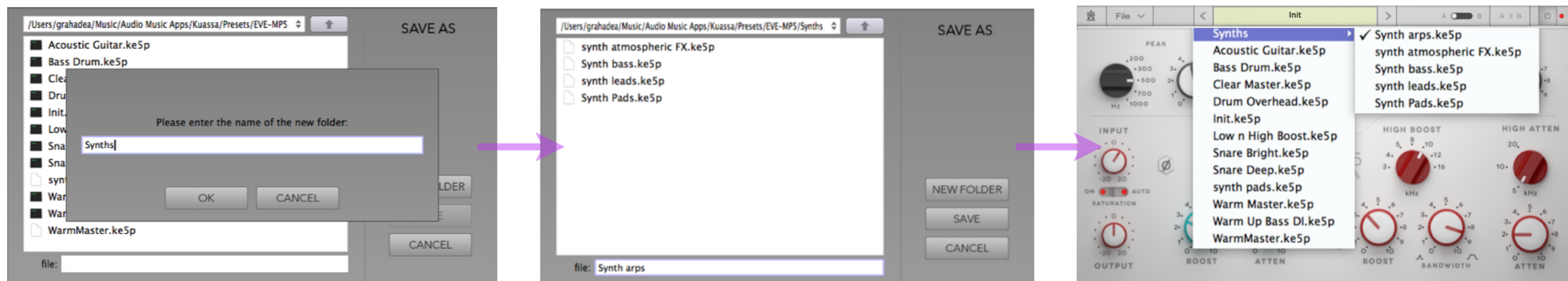
← PRESET MANAGEMENT (2/2) →

3. If you are creating a new preset using the “Save Preset As” option, make sure that you have chosen the correct preset folder as mentioned in [point 1 above](#) to make sure that it will be recognised automatically by EVE-MP5 plugins.

- **Mac:** *Users/[YourName]/Music/Audio Music Apps/Kuassa/Presets/EVE-MP5*
- **Win:** *~\Documents\Kuassa\Presets\EVE-MP5*



4. To create a new preset bank, simply create a “NEW FOLDER”. This is useful for grouping presets based on their instrument group or use. For example: group of drums, vocals, mastering, or anything you prefer.

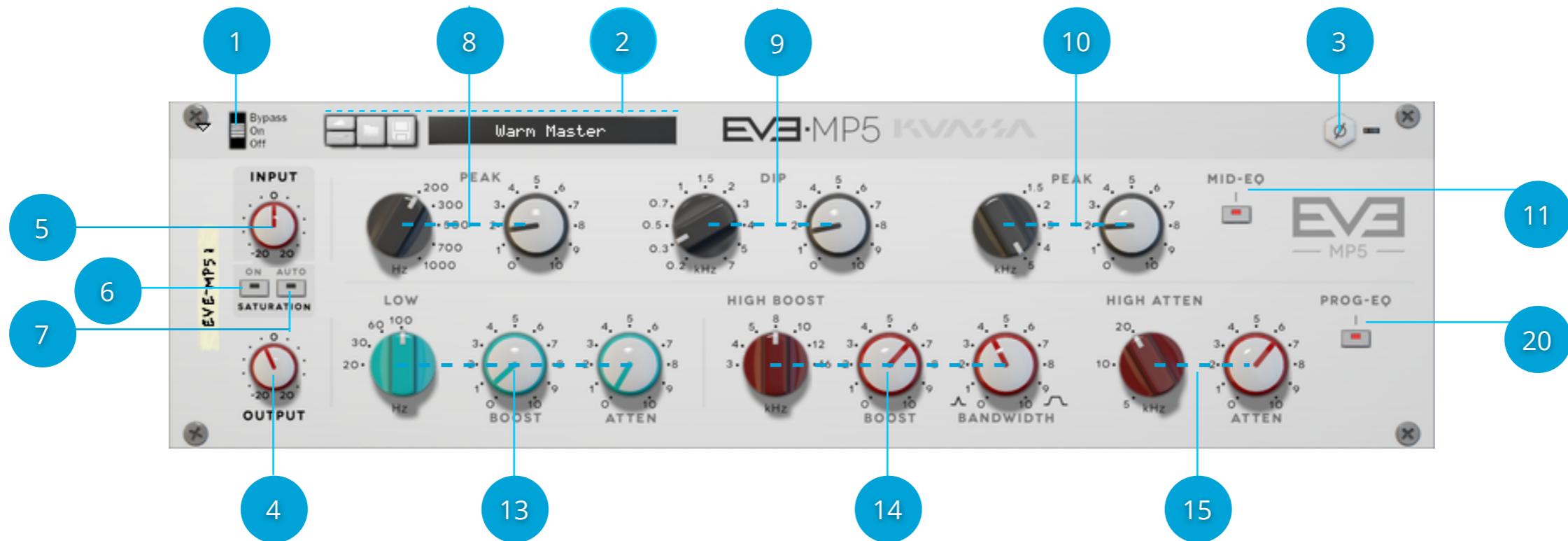




Rack Extension Version



FUNCTIONS: EVE-MP5



SECTION 1: GENERAL

1. **Bypass Slider:** Turns the EQ on, off, or bypass
2. **Preset Selector:** Select from available *Presets*, press up-down buttons or select from drop down menu
3. **Phase button:** Click to flip the phase of the output 180 degrees
4. **Output Trim:** Increase or decrease the track output volume after equalization
5. **Input:** Sets the input level of the device. When “Auto Switch”(7) is turned on, it will control the saturation amount with level automatically maintained.
6. **Saturation On/Off Switch:** Activate the modeled power amp saturation
7. **Auto Switch:** Activate the automatic level compensation for maintaining constant level in relation with input.

SECTION 2: MID-EQ

8. **Peak(200-1000Hz):** Select (*Hz*) and turn up to *boost* the selected frequency.
9. **Dip(0.2-7kHz):** Select (*Hz*) and turn up to *cut/attenuate* the selected frequency.

10. **Peak (1.5-5kHz):** Select (*Hz*) and turn up to *boost* the selected frequency.
11. **Mid-EQ Switch:** Enable or Disable the whole MID-EQ Section

SECTION 3: PROGRAM -EQ

12. **Prog-EQ Switch:** Enable or Disable the whole PROG-EQ section
13. **Low:** Select frequency (*Hz*) to be modified, and turn up the *Boost* knob to boost selected frequency or *Atten* knob to attenuate/cut the selected frequency. While *Boost* and *Atten* can be applied separately, they can be combined to achieve a unique frequency response widely known as the *Pultec Low End Trick*.
14. **High Boost:** Select desired frequency and turn the *Boost* knob to boost the selected frequency. You can change the width / Q value of the corresponding frequency by turning *Bandwidth* knob clockwise for broader Q value
15. **High Atten:** Select desired frequency, and turn the *Atten* knob to cut the selected frequency.

MIDI CC NAMES

Input Section

- [128] = Input Knob
- [129] = Saturation On/Off Switch
- [130] = "Auto" Switch

Middle Range Equalizer

- [135] = Mid-EQ on/off switch
- [136] = Peak(200-1000Hz) Frequency select Knob
- [137] = Peak(200-1000Hz) Frequency boost Knob
- [138] = Dip(0.2-7kHz) Frequency select knob
- [139] = Dip(0.2-7kHz) Frequency atten knob
- [140] = Peak(1.5-5kHz) Frequency select knob
- [141] = Peak(1.5-5kHz) Frequency boost knob

Program Equalizer Section

- [142] = Prog-EQ on/off switch
- [143] = Low frequency select knob
- [144] = Low boost knob
- [145] = Low atten knob
- [146] = High boost frequency select knob
- [147] = High boost knob
- [148] = High boost bandwidth
- [149] = High atten frequency select knob
- [150] = High atten knob

Misc

- [151] = Output knob
- [152] = Phase on/off switch

◆ CREDITS ◆

Developed by:

Iqbal Ansyori

Pratama Kusuma

Rendy Fajar

Bramantyo Ibrahim

Cil Satriawan

Adhitya Sulistya Wibisana

Arie Ardiansyah

Grahadea Kusuf

Rathomi Trinugraha

Sundawan Sukmaya

VST Plugin Technology by Steinberg Media Technologies, GmbH.

Audio Units by Apple, Inc.

Rack Extension by Propellerhead Software

Avid Audio eXtension by Avid Technologies, Inc.

◆ CONTACT ◆

PT Kuassa Teknika

Jl. Sukasenang V No.14

Bandung, 40124

West Java, Indonesia

Contact us: info@kuassa.com

Tech. Support: support@kuassa.com

<http://www.kuassa.com>

A PRODUCT OF:
KUASSA
BDG, WEST JAVA.
INDONESIA

<http://www.kuassa.com>

© 2016 PT Kuassa Teknika

Kuassa, EVE-MP5, is a trademark of PT Kuassa Teknika

All other commercial symbols, product and company names are trademarks or registered trademarks of their respective holders.

All rights reserved.