



# EFEKTOR CH3604 CHORUS





## THANK YOU FOR CHOOSING KUASSA PRODUCTS!

We encourage you to take the time to read this User Manual thoroughly to ensure trouble free and proper operation of the software.

Following the previous Efektor Distortion series, please welcome the newest addition to the Efektor series: Efektor Modulation. We studied and examined more than 20 models of fabled modulation effects from the 1950s to the last decade. From rack gears, desktop units, and effect pedals as well. Modulation effects are widely used by organ/synth players, guitarists, and studio engineers to add width, depth, and movement to the original sound. In this latest bundle, we collect the prominent ones and packed them into four devices.

RECOGNIZABLE FROM ITS DOUBLING EFFECT, THIS TYPE OF EFFECTS ARE KNOWN AS A STANDARD BUILT-IN EFFECT FROM GEARS SUCH AS THE ROLAND JAZZ CHORUS AMP AND ALSO THE ROLAND JUNO SYNTHESIZER.

- Ensemble: A true classic chorusing effect with great tone. soft, deep, and rich.
- Dimension: Add thickness, 3 dimensional depth and width from true analog circuit modeling.
- Tribunal Chorus: Big spectrum creates rich soundscapes in stereo. The sounds of multiple modulations combined together.

EFEKTOR  
**CH3604**  
CHORUS





## KEY FEATURES:

- Three modes of Modulation in every units.
- Bypass switch button.
- BPM sync.
- Mono or stereo mode.
- CV inputs for automation (RE Only)

## SYSTEM REQUIREMENTS

### Windows:

Windows Vista or Later (64 bit)

Core2 Duo, or AMD Phenom ii X4 or better (latest Intel i3, AMD A4, or better is recommended) with 4GB minimum RAM

VST or VST3 compatible host/DAW

Pro Tools 11 or later for AAX format

Propellerhead Reason 7.1 or later for Rack Extension format

### Macintosh:

Mac OS 10.11 or later (64 Bit).

Core2 Duo, or better (latest Intel i3 recommended)  
with 4GB minimum RAM

Native Apple Silicon support

VST, VST3, or Audio Units compatible host/DAW

Pro Tools 11 or later for AAX format

Propellerhead Reason 10.1 or later for Rack Extension format



# Installation

## MAC OSX 10.11 OR LATER

Note for MacOS X users: you will be asked for your password upon installation.

For Mac installer(.pkg) format, double-click the installer and follow the instructions. The installer automatically point to your Mac's default VST/VST3/AU/AAX plug-ins and Standalone path (see below). Alternatively you can customize the installation target to specific folder.

Here are the default folders installation path for each of our supported platforms in Mac OSX:

- Mac Audio Unit (EfektorCH3604.component) : /Library/Audio/Plug-Ins/Components/
- Mac VST (EfektorCH3604.vst) : /Library/Audio/Plug-Ins/VST/Kuassa/
- Mac VST3 (EfektorCH3604.vst3) : /Library/Audio/Plug-Ins/VST3/
- Mac AAX (EfektorCH3604.aaxplugin) : /Library/Application Support/Avid/Audio/Plug-Ins/

## WINDOWS VISTA OR LATER

For Windows Installer (.exe), double-click the installer and follow the instructions. The installer automatically points to your system's default plugins path (see below). Alternatively you can point the installation target to specific folder. Most VST host already have a "Plugins" or "VSTplugins" folder inside its installation directory, or you can point the host to read any folder you choose.

Here are the default folders installation path for each of our supported platforms:

- Windows 64-bit VST (EfektorCH3604.dll) : C:\Program Files\Steinberg\VstPlugins\Kuassa\
- Windows 64-bit VST3 (EfektorCH3604.vst3) : C:\Program Files\Common Files\VST3\
- Windows 64-bit AAX (EfektorCH3604.aaxplugin) : C:\Program Files\Common Files\Avid\Audio\Plug-Ins\

# Uninstallation

## MAC OSX 10.11 OR LATER

On a Mac, simply delete the plug-in located on the corresponding Plug-ins folder, and delete other folders and file resources located at,

Folders:

- /Library/Application Support/Kuassa/Default Presets/EfektorCH3604/
- /Users/[User Name]/Music/Kuassa/Presets/EfektorCH3604/

Files:

- /Library/Application Support/Kuassa/Misc/EfektorCH3604 EULA.txt
- /Library/Application Support/Kuassa/User Manuals/EfektorCH3604 Manual.pdf
- /Users/[User Name]/Music/Kuassa/Settings/EfektorCH3604.setting

## WINDOWS VISTA OR LATER

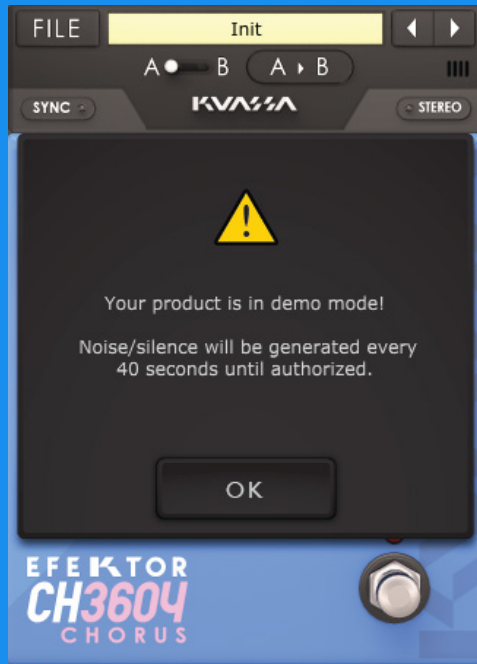
Use "Add/Remove programs" or "Programs and Features" from the Windows Control Panel. If Efektor CH3604 does not listed, delete the .dll/.vst3/.aaxplugin file from your VST plug-in folder. After Uninstallation, manually delete other Efektor CH3604 file resources at, Folder:

- C:\Users\[User Name]\Documents\Kuassa\Presets\EfektorCH3604\

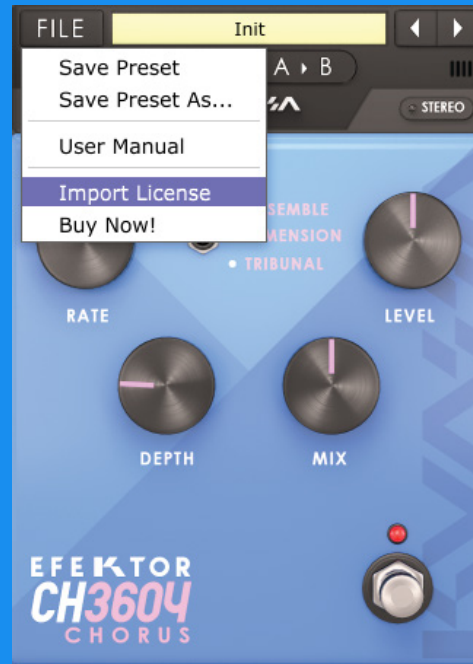
Files:

- C:\Users\[User Name]\Documents\Kuassa\Settings\EfektorCH3604.setting

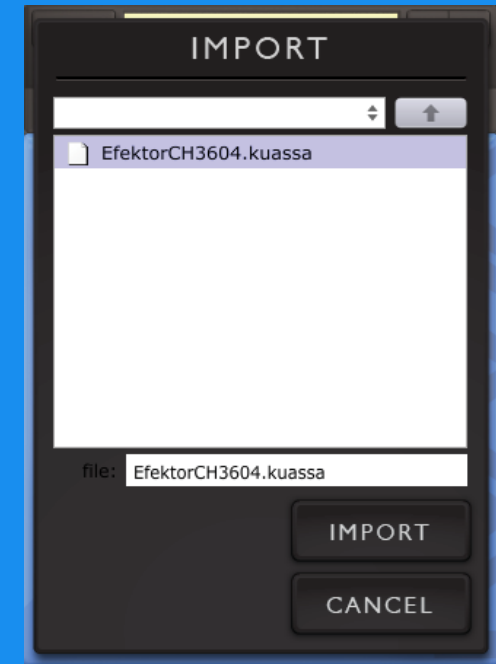
# Authorization



1 On evaluation mode, you will see this pop-up window when you first start the plugin.

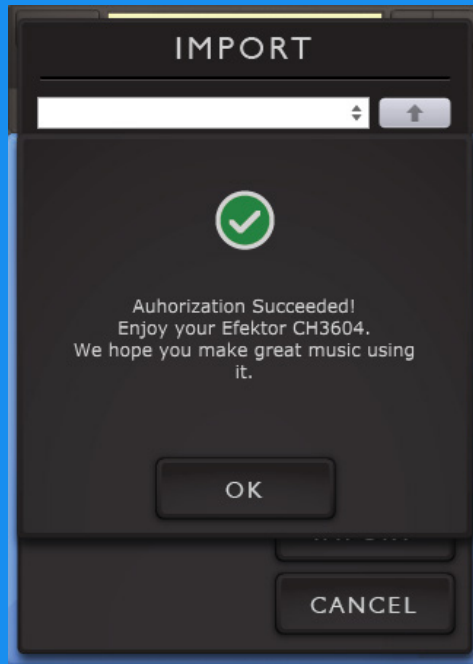


2 To start the authorization process, click the [File] button on the top-left of the plug-in's interface, there, you will find a selection box titled [Import License].



3 Locate the License File [EfektorCH3604.kuassa] obtained from the confirmation e-mail sent to you after you purchase EFEKTOR Plug-in(s) from our web store or downloaded from member area. Note that the License File contains your personal information used to authorize the plug-in.

# Authorization (Cont'd)



- 4 After you locate the License File, a pop-up box confirming that you are successfully authorize your plug-in will show.

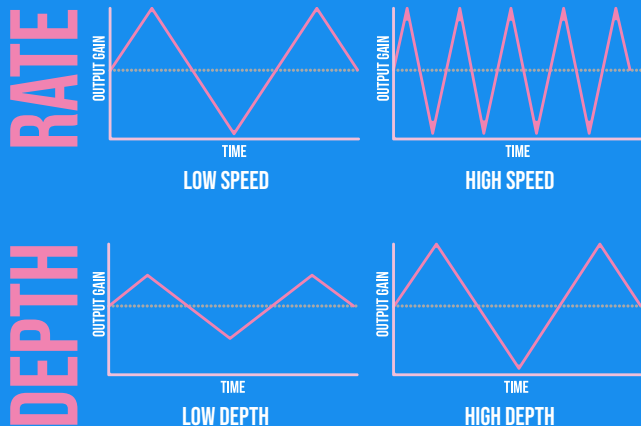


- 5 To check if you have completed the authorization process, just simply load the About Box by clicking the Efektor logo on the bottom left corner. If your authorization is successful, either your name or your e-mail address will be shown on the About Box. You will also notice that the generated noise/silence on the Evaluation Version is now gone.

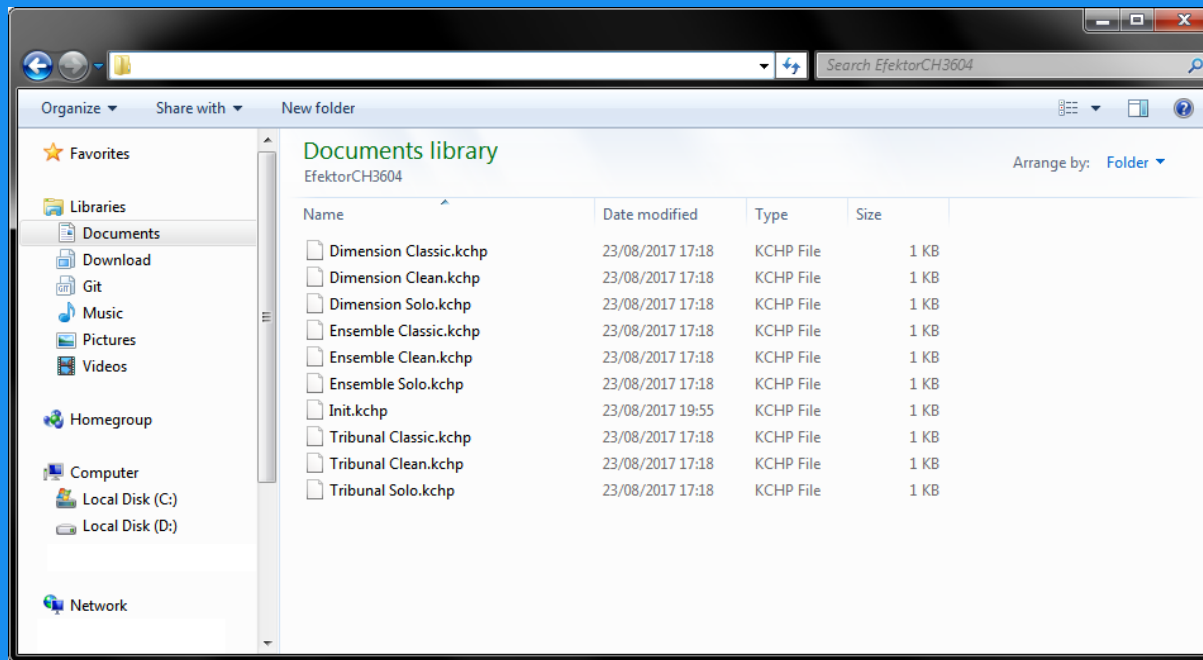
# Function



- 1 [FILE] BUTTON: The Menu button contains several functions; preset saving, license file authorization, and shortcuts to the user manual and Kuassa website.
- 2 PRESET SELECTOR: Select from available Presets, press left-right buttons or select from drop down menu.
- 3 SYNC: Enables synchronization of Rate to the host's tempo in BPM.
- 4 A-B COMPARE: Compares two different settings of the plug-in.
- 5 COPY A to B: Copies settings from the "A" state to the "B" state.
- 6 STEREO: Enables or Disables stereo output.
- 7 RATE: Controls the frequency, or the speed of the oscillation. On manual mode, the range is from 0.01 Hz to 20 Hz. When "Sync" is enabled, the range will be from 8 to 1/32T.
- 8 DEPTH: Controls the height, or amplitude of the modulated signal. On minimum settings, the effect will be very subtle, almost inaudible.
- 9 MIX: Blends the levels of the "dry" (clean) input signal and the "wet" (processed) signal.
- 10 LEVEL: Controls the overall output level from the plug-ins.
- 11 TYPE SELECTOR: There are multiple fx models emulated within the device, each comes from different era, with different flavor, and character. Pick one which suited your desired sound.
- 12 BYPASS: Turns the effect unit completely On or Bypass.
- 13 EFEKTOR LOGO: Click to show the About Box.



# Preset Management



1 Presets for EFEKTOR Plug-in(s) are located in the following folders\*:

- Mac: Users/[YourName]/Music/Kuassa/Presets/EfektorCH3604
- Win: ~\Documents\Kuassa\Presets\EfektorCH3604

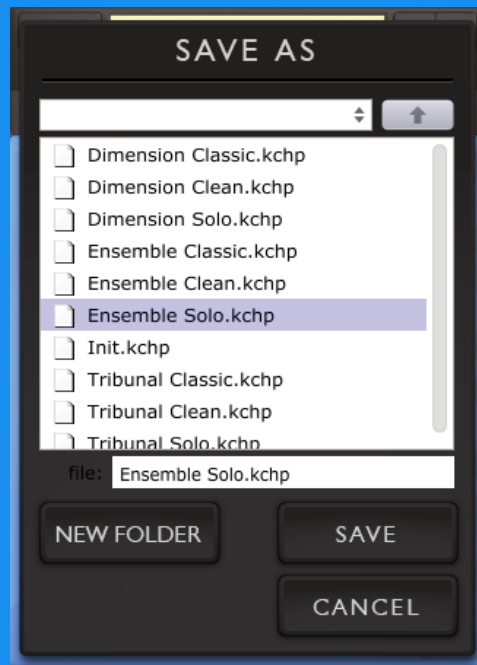
All presets inside these folders will be recognized by the plugin as individual presets, you can also create a folder to group the preset(s). They will thus be shown on the EFEKTOR Plug-in's preset selector.

2 To save a preset, set your plugin to the desired parameter settings, then select:

- "Save Preset": Overwrites currently active preset.
- "Save Preset As": Saves current settings into a new preset file (\*.kchp for CH3604).

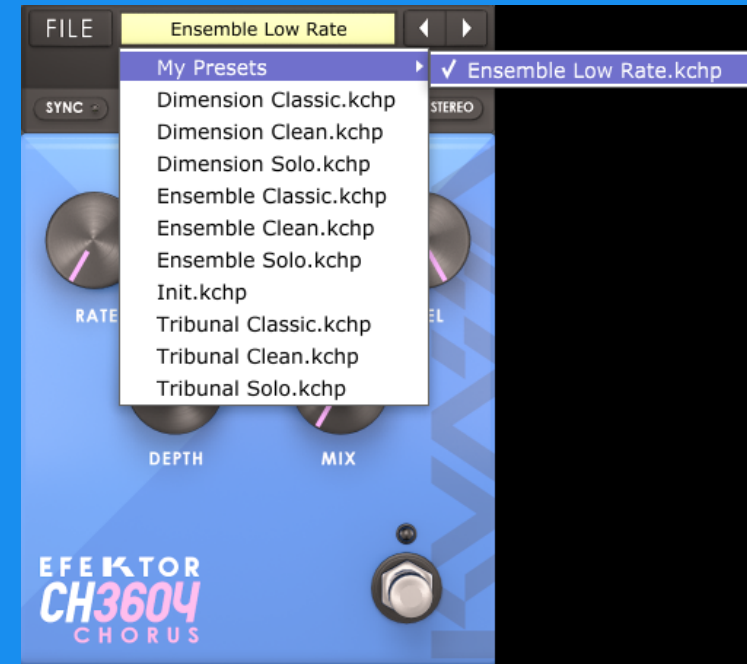
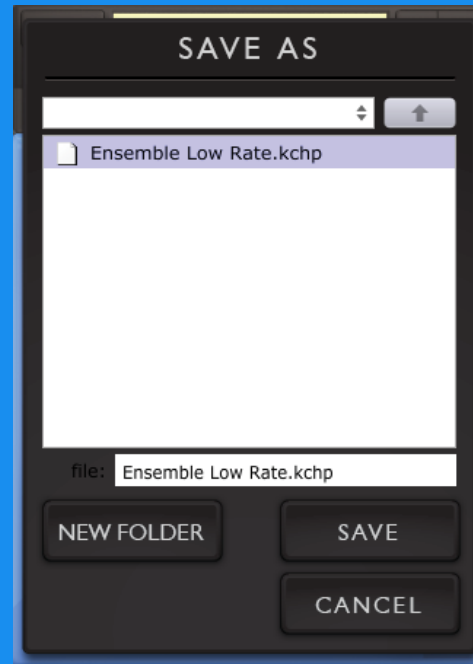
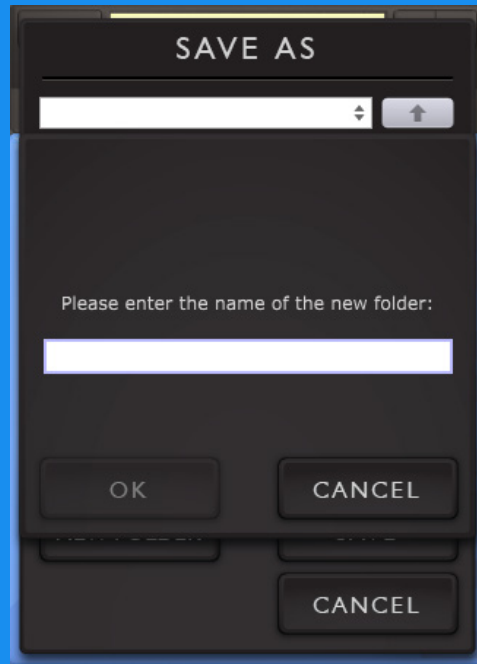


# Preset Management



- 3 When you create a new preset using "Save Preset As...", make sure that you have chosen the correct preset folder as aforementioned on point 1 above to make sure that it will be recognized automatically by EFEKTOR plug-ins.

# Preset Management

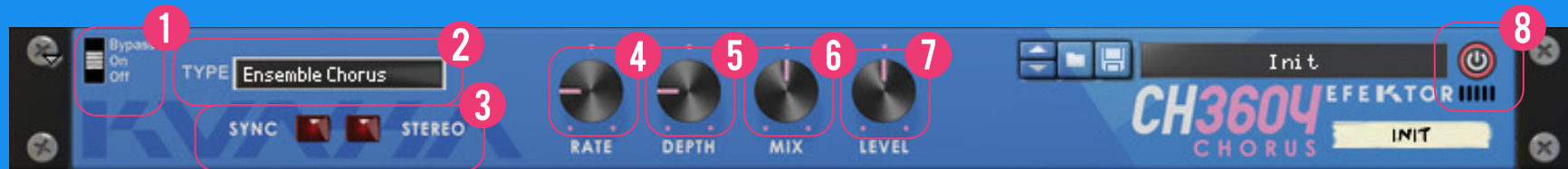


- 4 To add new additional preset banks, create a new folder by clicking "New Folder" button and rename it. Sub-folders are also recognized to manage presets into groups, useful to manage additional preset bank, or grouping presets based by their use.

# EFEKTOR CH3604 CHORUS



# Function



## 1 BYPASS

Turns on, off or bypass the rack extension.

## 2 TYPE SELECTOR

There are multiple fx models emulated within the device, each comes from different era, with different flavor, and character. Pick one which suited your desired sound.

## 3 SYNC & STEREO

SYNC: Enables synchronization of Rate to the host's tempo in BPM.

STEREO: Enables or Disables stereo output.

## 4 RATE KNOB

Controls the frequency, or the speed of the oscillation. On manual mode, the range is from 0.01 Hz to 20 Hz. When "Sync" is enabled, the range will be from 1 to 1/32T.

## 5 DEPTH KNOB

Controls the height, or amplitude of the modulated signal. On minimum settings, the effect will be very subtle, almost inaudible.

## 6 MIX KNOB

Blends the levels of the "dry" (clean) input signal and the "wet" (processed) signal.

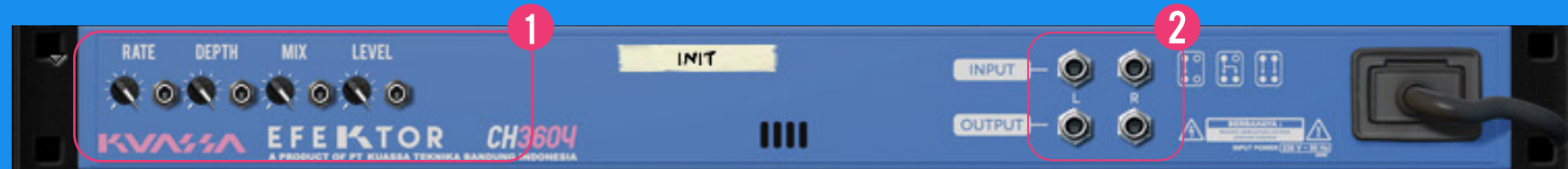
## 7 LEVEL KNOB

Controls the overall output level from the plug-ins.

## 8 ADDITIONAL BYPASS SWITCH

Turns the effect unit completely On or Bypass.

# Function



## 1 CV INPUTS

### CV INPUT SOCKET:

Receives incoming CV message for controlling each of EFEKTOR's CV control enabled parameters from another device's CV output.

### CV INPUT TRIM:

Turn counter-clockwise for each corresponding input to trim or reduce the intensity of incoming CV message.

## 2 AUDIO INPUT AND OUTPUT SOCKETS :

Please note that EFEKTOR is an FX, and should always be added as FX device instead of instrument.

### MIDI CC PARAMETER LIST (PROPELLERHEAD REASON)

● CC  
● PARAMETER NAME



128 = ON BYPASS  
129 = CHORUS TYPE  
130 = SYNC ON  
131 = STEREO ON  
132 = RATE  
133 = RATE SYNC  
134 = DEPTH  
135 = MIX  
136 = LEVEL

## **Kuassa Efektor Series Created by:**

**Muhammad Abduh  
Abshar Platisza  
Muhammad Yusreza Irsyan  
Intan Zariska Daniyanti  
Iman Firman Amarullah  
Juan Prahamma Hartjamt  
Dimitar Nalbantov  
Arie Ardiansyah  
Raden Pratama Kusuma  
Adhitya Sulistia Wibisana  
Bramantyo Ibrahim  
Cil Satriawan  
Grahadea Kusuf  
Iqbal Ansyori  
Rathomi Trinugraha  
Bayu Ardianto  
Sundawan Sukmaya**

## **Presets and Audio Demos by:**

**Dimitar Nalbantov (<http://www.nalbantov.com>)**



# EFEKTOR CH3604 CHORUS

## KUASSA TEKNIKA, PT

Jl. Dipati Ukur No. 71A

Bandung 40132

West Java, INDONESIA

<https://www.kuassa.com>

General inquiry: [info@kuassa.com](mailto:info@kuassa.com)

Technical support :  
[support@kuassa.com](mailto:support@kuassa.com)



A Product of KUASSA. Bandung, West Java. Indonesia  
© 2010-2022 PT Kuassa Teknika

Kuassa and Efektor CH3604 are trademarks of PT Kuassa Teknika, Indonesia.

All other commercial symbols, product and company names are trademarks or registered trademarks of their respective holders.

All rights reserved.