



EFEKTOR WF3607 WAH FILTER





THANK YOU FOR CHOOSING KUASSA PRODUCTS!

We encourage you to take the time to read this User Manual thoroughly to ensure trouble free and proper operation of the software.

Completing your virtual pedalboard with our Efektor series, now introducing: KUASSA WF3607 WAH FILTER.

Designed to mimic the “wa wa” sound from a Wah pedal. WF3607 features 6 modes of filtering effect taken from the familiar crybaby sound to synth-like filters.

EFEKTOR WF3607 WAH FILTER

IN THE 1920S GUITAR PLAYERS WERE FASCINATED BY THE “WA WA WA” SOUND MADE BY TRUMPET PLAYERS BY OPENING AND CLOSING THEIR MUTES. ITS FILTERING EFFECT ALTERS THE RESONANCE OF THE INSTRUMENTS AND SOUNDS LIKE A HUMAN VOICE SAYING THE SYLLABLE “WAH”. IT FEELS TO INCREASE THE EXPRESSIVENESS OF PLAYING. MORE THAN 40 YEARS LATER, AN ACCIDENTAL INVENTION ON A SMALL WAREHOUSE IN LOS ANGELES RESULTED IN A DEVICE THAT FOREVER CHANGES THE SOUND OF MUSIC. RELEASED FIRST AS VOX WAH-WAH, THIS PEDAL EVENTUALLY KNOWN AS THE CRY BABY. THE UNIQUE SOUND ATTRACTED MANY GUITAR PLAYERS SUCH AS FRANK ZAPPA, ERIC CLAPTON AND JIMI HENDRIX THAT RESULTED IN INCREASING POPULARITY OF THE PEDAL. NEXT, IN THE 1970S, EFFORTS TO DEVELOP A PRODUCT FROM AN ABORTED SYNTHESIZER PROJECT RESULTED IN AN SIMILAR “WAH WAH” EFFECT WITHOUT THE ROCKING PEDAL, WHICH LATER KNOWN AS ENVELOPE FILTER EFFECT, IN THE NAME OF MU-TRON III. THESE TWO DEVICES REVOLUTIONIZED ALMOST EVERY GENRE OF MUSIC AS WE KNOW IT TODAY.





KEY FEATURES:

- Five types of effects in every unit.
- Independent Gain, Tone, and Output volume controls.
- Bypass switch button.
- Up to 8x oversampling.
- CV inputs for automation (RE Only)

SYSTEM REQUIREMENTS

Windows:

Windows Vista or Later (64 bit)

Core2 Duo, or AMD Phenom ii X4 or better (latest Intel i3, AMD A4, or better is recommended) with 4GB minimum RAM

VST or VST3 compatible host/DAW

Pro Tools 11 or later for AAX format

Propellerhead Reason 7.1 or later for Rack Extension format

Macintosh:

Mac OS 10.11 or later (64 Bit).

Core2 Duo, or better (latest Intel i3 recommended)
with 4GB minimum RAM

Native Apple Silicon support

VST, VST3, or Audio Units compatible host/DAW

Pro Tools 11 or later for AAX format

Propellerhead Reason 10.1 or later for Rack Extension format

Installation

MAC OSX 10.11 OR LATER

Note for MacOS X users: you will be asked for your password upon installation.

For Mac installer(.pkg) format, double-click the installer and follow the instructions. The installer automatically point to your Mac's default VST/VST3/AU/AAX plug-ins and Standalone path (see below). Alternatively you can customize the installation target to specific folder.

Here are the default folders installation path for each of our supported platforms in Mac OSX:

- Mac Audio Unit (EfektorWF3607.component) : /Library/Audio/Plug-Ins/Components/
- Mac VST (EfektorWF3607.vst) : /Library/Audio/Plug-Ins/VST/Kuassa/
- Mac VST3 (EfektorWF3607.vst3) : /Library/Audio/Plug-Ins/VST3/
- Mac AAX (EfektorWF3607.aaxplugin) : /Library/Application Support/Avid/Audio/Plug-Ins/

WINDOWS VISTA OR LATER

For Windows Installer (.exe), double-click the installer and follow the instructions. The installer automatically points to your system's default plugins path (see below). Alternatively you can point the installation target to specific folder. Most VST host already have a "Plugins" or "VSTplugins" folder inside its installation directory, or you can point the host to read any folder you choose.

Here are the default folders installation path for each of our supported platforms:

- Windows 64-bit VST (EfektorWF3607.dll) : C:\Program Files\Steinberg\VstPlugins\Kuassa\
- Windows 64-bit VST3 (EfektorWF3607.vst3) : C:\Program Files\Common Files\VST3\
- Windows 64-bit AAX (EfektorWF3607.aaxplugin) : C:\Program Files\Common Files\Avid\Audio\Plug-Ins\

Uninstallation

MAC OSX 10.11 OR LATER

On a Mac, simply delete the plug-in located on the corresponding Plug-ins folder, and delete other folders and file resources located at,

Folders:

- /Library/Application Support/Kuassa/Default Presets/EfektorWF3607/
- /Users/[User Name]/Music/Kuassa/Presets/EfektorWF3607/

Files:

- /Library/Application Support/Kuassa/Misc/EfektorWF3607 EULA.txt
- /Library/Application Support/Kuassa/User Manuals/EfektorWF3607 Manual.pdf
- /Users/[User Name]/Music/Kuassa/Settings/EfektorWF3607.setting

WINDOWS VISTA OR LATER

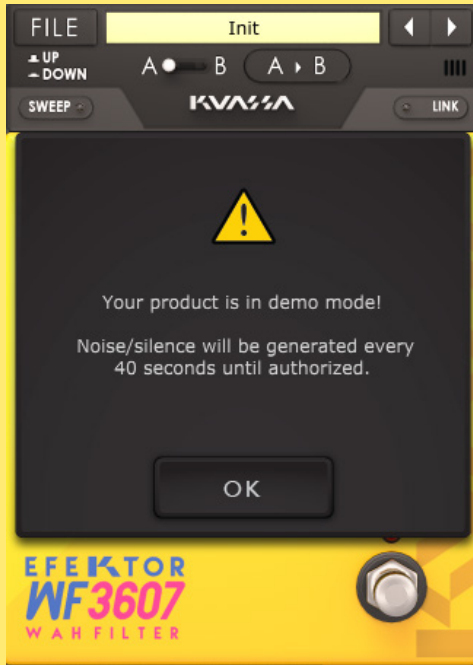
Use “Add/Remove programs” or “Programs and Features” from the Windows Control Panel. If Efektor WF3607 does not listed, delete the .dll/.vst3/.aaxplugin file from your VST plug-in folder. After Uninstallation, manually delete other Efektor WF3607 file resources at, Folder:

- C:\Users\[User Name]\Documents\Kuassa\Presets\EfektorWF3607\

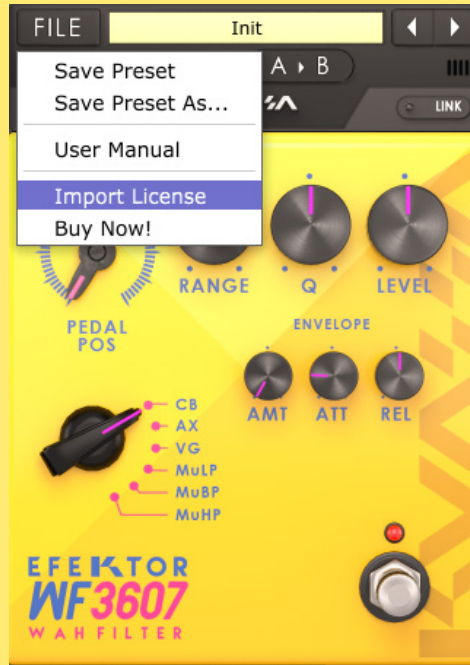
Files:

- C:\Users\[User Name]\Documents\Kuassa\Settings\EfektorWF3607.setting

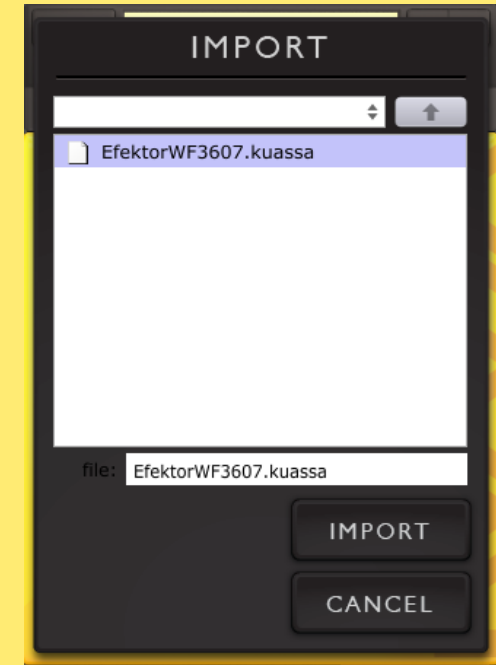
Authorization



1 On evaluation mode, you will see this pop-up window when you first start the plugin.

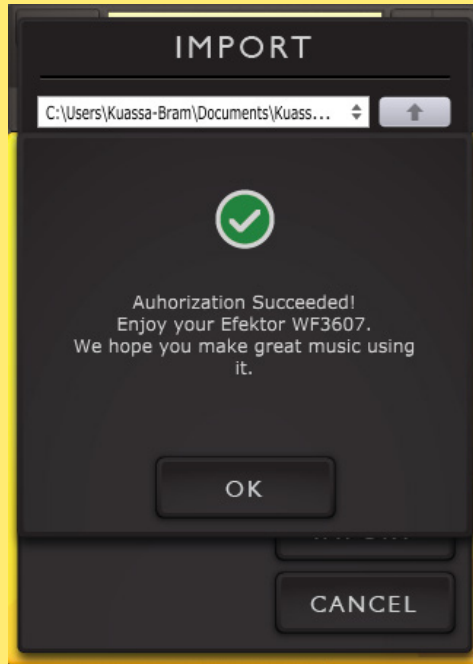


2 To start the authorization process, click the [File] button on the top-left of the plug-in's interface, there, you will find a selection box titled [Import License].

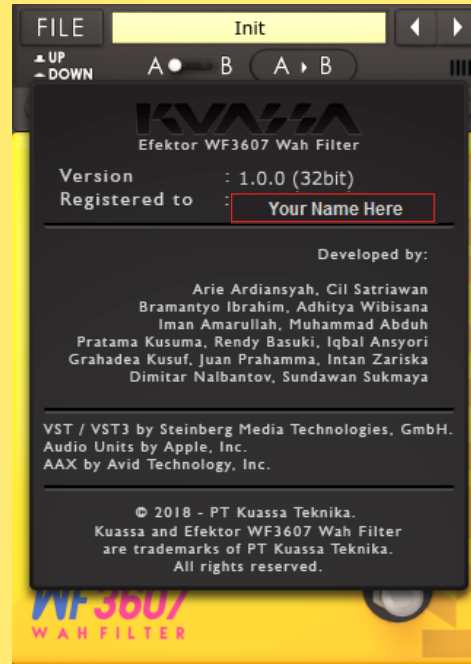


3 Locate the License File [EfektorWF3607.kuassa] obtained from the confirmation e-mail sent to you after you purchase EFEKTOR Plug-in(s) from our web store or downloaded from member area. Note that the License File contains your personal information used to authorize the plug-in.

Authorization (Cont'd)



- 4 After you locate the License File, a pop-up box confirming that you are successfully authorize your plug-in will show.



- 5 To check if you have completed the authorization process, just simply load the About Box by clicking the Efektor logo on the bottom left corner. If your authorization is successful, either your name or your e-mail address will be shown on the About Box. You will also notice that the generated noise/silence on the Evaluation Version is now gone.

Function



- 1 [FILE] BUTTON: The Menu button contains several functions; preset saving, license file authorization, and shortcuts to the user manual and Kuassa website.
- 2 PRESET SELECTOR: Select from available Presets, press left-right buttons or select from drop down menu.
- 3 A-B COMPARE: Compares two different settings of the effect.
- 4 COPY A to B: Copies settings from the "A" state to the "B" state.
- 5 LINK: Link left and right channel in stereo mode.
- 6 PEDAL POSITION: Emulates the rocking action of wah pedal. Center frequency in Hz.
- 7 RANGE: Adjusts the depth of the 'moving' frequency range.
- 8 Q WIDTH: Adjusts the width of the frequency curve.
- 9 LEVEL: Controls the overall output level of the effect.
- 10 SELECTOR SWITCH: Select from 6 types of available filter modes.
 - CB: *Cry Baby
 - AX: *Vertex Axis Wah
 - VG: *Vox(™) Grey Wah
 - MuLP: *Mu-Tron Low Pass
 - MuBP: *Mu-Tron Band Pass
 - MuHP: *Mu-Tron High Pass
- 11 ENVELOPE:
 - AMOUNT: Adjusts boosting of the center frequency.
 - ATTACK: Controls how fast the envelope start.
 - RELEASE: Controls how fast the envelope returns to starting position.
- 12 BYPASS: Turns the effect unit completely On or Bypass.
- 13 EFEKTOR LOGO: Click to show the About Box.

*Disclaimer: All other product names and trademarks are the property of their respective owners, which are in no way associated or affiliated with Kuassa.

Function

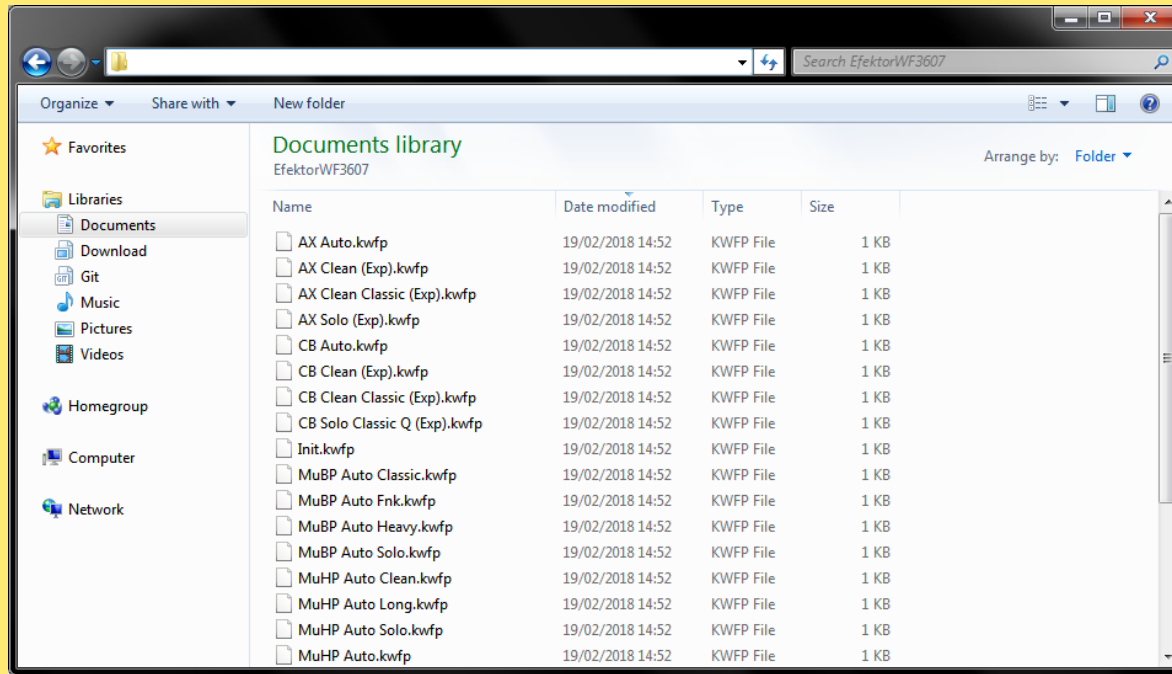


MIDI CONTROLLERS

MIDI INPUT: Right click on the pedal position knob or bypass switch, click “Learn”, and move your MIDI controller.

CLEAR CONTROLLERS: Clear MIDI assignments.

Preset Management



1 Presets for EFEKTOR Plug-in(s) are located in the following folders*:

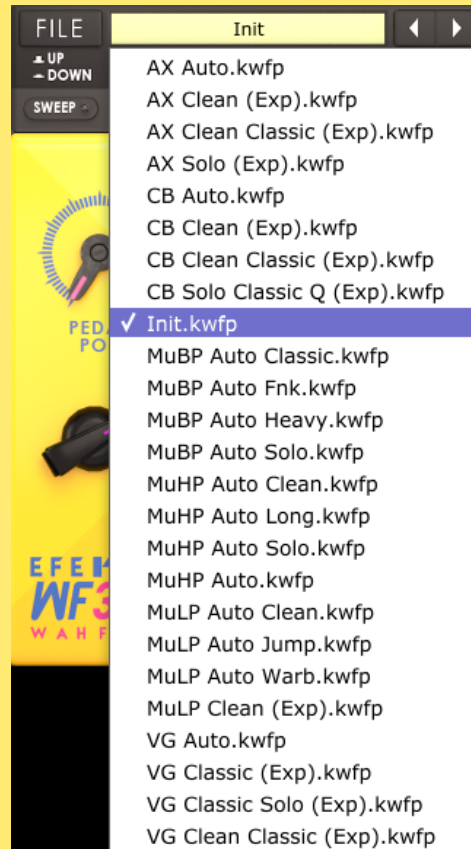
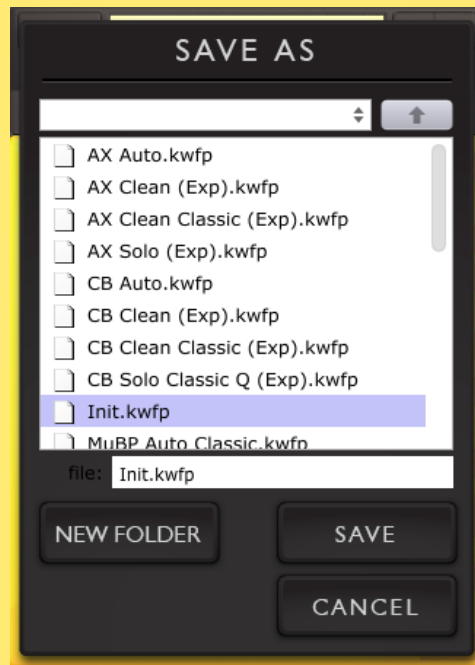
- Mac: Users/[YourName]/Music/Kuassa/Presets/EfektorWF3607
- Win: ~\Documents\Kuassa\Presets\EfektorWF3607

All presets inside these folders will be recognized by the plugin as individual presets, you can also create a folder to group the preset(s). They will thus be shown on the EFEKTOR Plug-in's preset selector.

2 To save a preset, set your plugin to the desired parameter settings, then select:

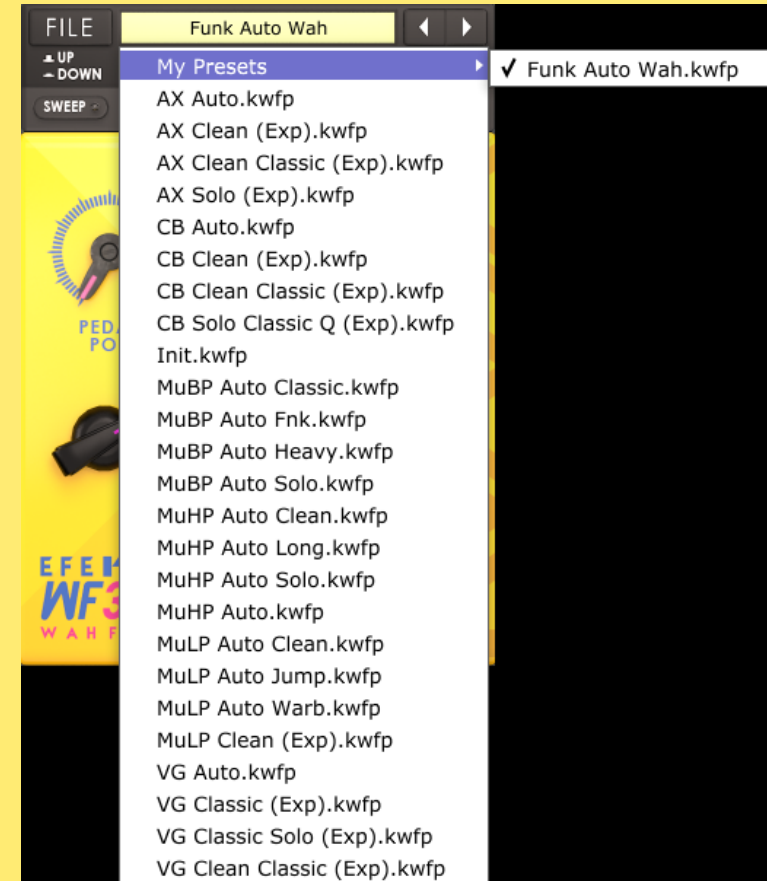
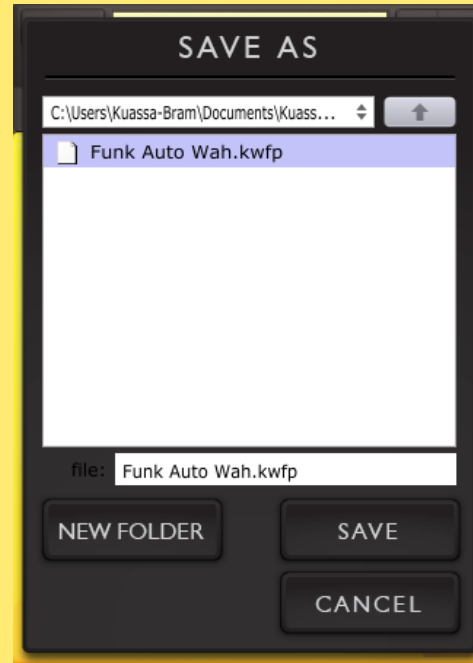
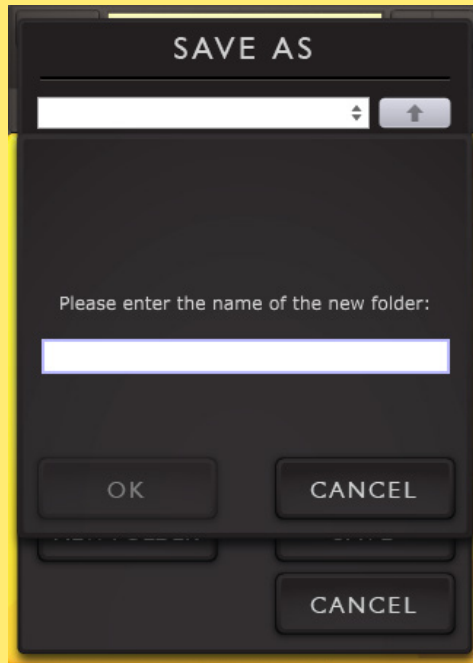
- "Save Preset": Overwrites currently active preset.
- "Save Preset As": Saves current settings into a new preset file (*.kwfp for WF3607).

Preset Management



- 3 When you create a new preset using "Save Preset As...", make sure that you have chosen the correct preset folder as aforementioned on point 1 above to make sure that it will be recognized automatically by EFEKTOR plug-ins.

Preset Management



- 4 To add new additional preset banks, create a new folder by clicking "New Folder" button and rename it. Sub-folders are also recognized to manage presets into groups, useful to manage additional preset bank, or grouping presets based by their use.

EFEKTOR WF3607 WAH FILTER



Function



1 BYPASS

Turns on, off or bypass the rack extension.

2 TYPE SELECTOR

Select from 5 types of available filter modes.

- CB: Cry Baby
- AX: Vertex Axis Wah
- VG: Vox(™) Grey Wah
- MuLP: Mu-Tron Low Pass
- MuBP: Mu-Tron Band Pass
- MuHP: Mu-Tron High Pass

3 PEDAL POSITION

Emulates the rocking action of wah pedal.
Center frequency in Hz.

4 RANGE KNOB

Adjusts the depth of the 'moving' frequency range.

5 Q WIDTH KNOB

Adjusts the width of the frequency curve.

6 ENVELOPE

- AMOUNT: Adjusts boosting of the center frequency.
- ATTACK: Controls how fast the envelope start.
- RELEASE: Controls how fast the envelope returns to starting position.

7 LEVEL KNOB

Controls the overall output level of the effect.

8 ADDITIONAL BYPASS SWITCH

Turns the effect unit completely On or Bypass.

Function



1 CV INPUTS

CV INPUT SOCKET:

Receives incoming CV message for controlling each of EFEKTOR's CV control enabled parameters from another device's CV output.

CV INPUT TRIM:

Turn counter-clockwise for each corresponding input to trim or reduce the intensity of incoming CV message.

2 AUDIO INPUT AND OUTPUT SOCKETS :

Please note that EFEKTOR is an FX, and should always be added as FX device instead of instrument.

MIDI CC PARAMETER LIST (PROPELLERHEAD REASON)

● CC
● PARAMETER NAME



128 = ON BYPASS SWITCH
129 = FILTER TYPE
130 = SWEEP DOWN ON
131 = LINK ON
132 = PEDAL POS
133 = RANGE KNOB
134 = Q WIDTH KNOB
135 = ENVELOPE AMOUNT
136 = ENVELOPE ATTACK
137 = ENVELOPE RELEASE
138 = LEVEL KNOB

Kuassa Efektor Series Created by:

**Muhammad Abduh
Abshar Platisza
Muhammad Yusreza Irsyan
Intan Zariska Daniyanti
Iman Firman Amarullah
Juan Prahamma Hartjamt
Dimitar Nalbantov
Arie Ardiansyah
Raden Pratama Kusuma
Adhitya Sulistia Wibisana
Bramantyo Ibrahim
Cil Satriawan
Grahadea Kusuf
Iqbal Ansyori
Rathomi Trinugraha
Bayu Ardianto
Sundawan Sukmaya**

Presets and Audio Demos by:

Dimitar Nalbantov (<http://www.nalbantov.com>)



KUASSA TEKNIKA, PT

Jl. Dipati Ukur No. 71A

Bandung 40132

West Java, INDONESIA

<https://www.kuassa.com>

General inquiry: info@kuassa.com

TECHNICAL SUPPORT :

support@kuassa.com



A Product of KUASSA. Bandung, West Java. Indonesia
© 2010-2022 PT Kuassa Teknika

Kuassa and Efektor WF3607 are trademarks of PT Kuassa Teknika, Indonesia.

All other commercial symbols, product and company names are trademarks or registered trademarks of their respective holders.

All rights reserved.