



# EFEKTOR *DL3606* DELAY





The logo for Efektor DL3606 Delay. The word "EFEKTOR" is in blue, with a stylized black and grey geometric shape replacing the letter 'K'. Below it, "DL3606" is written in a large, bold font, with "DL" in pink and "3606" in teal. At the bottom, the word "DELAY" is in a smaller, bold, black font.

# EFEKTOR DL3606 DELAY

## THANK YOU FOR CHOOSING KUASSA PRODUCTS!

We encourage you to take the time to read this User Manual thoroughly to ensure trouble free and proper operation of the software.

Delay. It's probably one of the most essential effects in audio processing, even before widely used in music. It all started in the 1940s, where studio engineers utilized multiple tape machines to create repeats of a signal for creative uses. Along with the advancement of technology, this particular kind of effect is still developed continuously with more features, new sounds, and modern routing possibilities. On the other hand, many players still seek for classic delay sound that can be heard on a great number of timeless records.

In the path to complete our line of Efektor plugins, Kuassa present the Efektor DL3606 Delay.

Efektor DL3606 brings five most common types of delay effect to your DAW, complete with modulation parameter to add life and movement to the repeats or echoes.

Started from utilizing multiple tape recorders, oil can electrostatic units, portable tape delay machines, to rack units and compact delay pedals; Kuassa Efektor DL3606 Delay provides 5 types of delay at your disposal.



## KEY FEATURES:

- 5 popular delay types:
  - Digital: Clean and clear, with wide frequency range.
  - Analog: Dark and mushy, inspired by the bucket brigade delay pedals
  - Lo-Fi: Grainy and dirty, lower bitrate with reduced frequency range
  - Tape: Simulated the warm and lush sound of vintage tape units
  - Reverse: Repeats the signal backwards for ethereal and ambient effect
- Modulation section with individual Rate and Depth controls
- Separate Wet and Dry controls
- BPM sync
- Photorealistic graphics for lifelike guitar playing experience
- Straightforward and easy to use interface
- CV Inputs for Automation (Rack Extension only)

## SYSTEM REQUIREMENTS

Windows:

Windows Vista or Later (64 bit)

Core2 Duo, or AMD Phenom ii X4 or better (latest Intel i3, AMD A4, or better is recommended) with 4GB minimum RAM

VST or VST3 compatible host/DAW

Pro Tools 11 or later for AAX format

Propellerhead Reason 7.1 or later for Rack Extension format

Macintosh:

Mac OS 10.11 or later (64 Bit).

Core2 Duo, or better (latest Intel i3 recommended)  
with 4GB minimum RAM

Native Apple Silicon support

VST, VST3, or Audio Units compatible host/DAW

Pro Tools 11 or later for AAX format

Propellerhead Reason 10.1 or later for Rack Extension format

# Installation

## MAC OSX 10.11 OR LATER

Note for MacOS X users: you will be asked for your password upon installation.

For Mac installer(.pkg) format, double-click the installer and follow the instructions. The installer automatically point to your Mac's default VST/VST3/AU/AAX plug-ins and Standalone path (see below). Alternatively you can customize the installation target to specific folder.

Here are the default folders installation path for each of our supported platforms in Mac OSX:

- Mac Audio Unit (EfektorDL3606.component) : /Library/Audio/Plug-Ins/Components/
- Mac VST (EfektorDL3606.vst) : /Library/Audio/Plug-Ins/VST/Kuassa/
- Mac VST3 (EfektorDL3606.vst3) : /Library/Audio/Plug-Ins/VST3/
- Mac AAX (EfektorDL3606.aaxplugin) : /Library/Application Support/Avid/Audio/Plug-Ins/

## WINDOWS VISTA OR LATER

For Windows Installer (.exe), double-click the installer and follow the instructions. The installer automatically points to your system's default plugins path (see below). Alternatively you can point the installation target to specific folder. Most VST host already have a "Plugins" or "VSTplugins" folder inside its installation directory, or you can point the host to read any folder you choose.

Here are the default folders installation path for each of our supported platforms:

- Windows 64-bit VST (EfektorDL3606.dll) : C:\Program Files\Steinberg\VstPlugins\Kuassa\
- Windows 64-bit VST3 (EfektorDL3606.vst3) : C:\Program Files\Common Files\VST3\
- Windows 64-bit AAX (EfektorDL3606.aaxplugin) : C:\Program Files\Common Files\Avid\Audio\Plug-Ins\

# Uninstallation

## MAC OSX 10.11 OR LATER

On a Mac, simply delete the plug-in located on the corresponding Plug-ins folder, and delete other folders and file resources located at,

Folders:

- /Library/Application Support/Kuassa/Default Presets/EfektorDL3606/
- /Users/[User Name]/Music/Kuassa/Presets/EfektorDL3606/

Files:

- /Library/Application Support/Kuassa/Misc/EfektorDL3606 EULA.txt
- /Library/Application Support/Kuassa/User Manuals/EfektorDL3606 Manual.pdf
- /Users/[User Name]/Music/Kuassa/Settings/EfektorDL3606.setting

## WINDOWS VISTA OR LATER

Use “Add/Remove programs” or “Programs and Features” from the Windows Control Panel. If Efektor DL3606 does not listed, delete the .dll/.vst3/.aaxplugin file from your VST plug-in folder. After Uninstallation, manually delete other Efektor DL3606 file resources at, Folder:

- C:\Users\[User Name]\Documents\Kuassa\Presets\EfektorDL3606\

Files:

- C:\Users\[User Name]\Documents\Kuassa\Settings\EfektorDL3606.setting

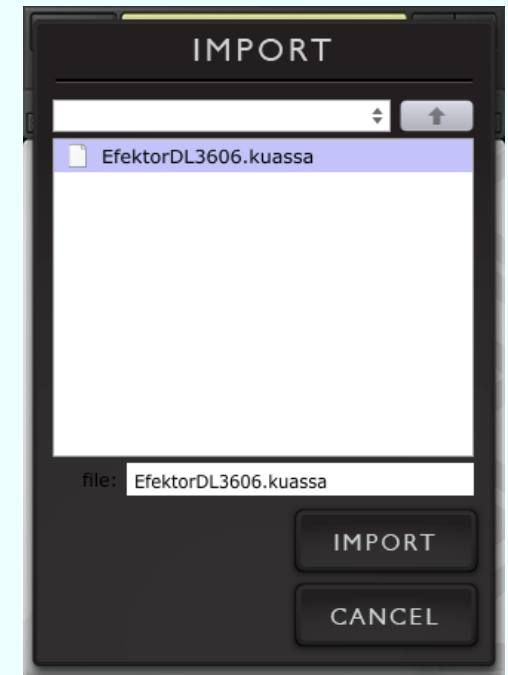
# Authorization



- 1 On evaluation mode, you will see this pop-up window when you first start the plugin.

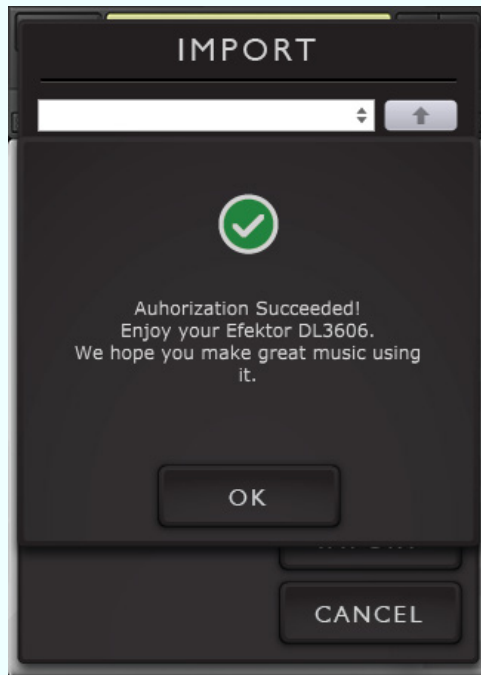


- 2 To start the authorization process, click the [File] button on the top-left of the plug-in's interface, there, you will find a selection box titled [import License].

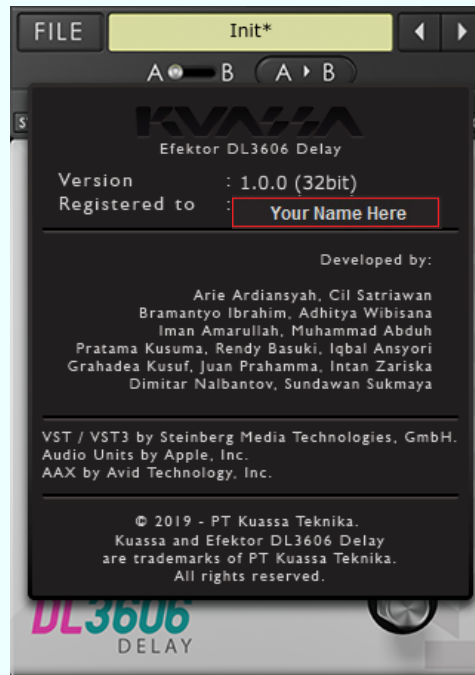


- 3 Locate the License File [EfektorDL3606.kuassa] obtained from the confirmation e-mail sent to you after you purchase EFEKTOR Plug-in(s) from our web store or downloaded from member area. Note that the License File contains your personal information used to authorize the plug-in.

# Authorization (Cont'd)



- 4 After you locate the License File, a pop-up box confirming that you are successfully authorize your plug-in will show.



- 5 To check if you have completed the authorization process, just simply load the About Box by clicking the Efektor logo on the bottom left corner. If your authorization is successful, either your name or your e-mail address will be shown on the About Box. You will also notice that the generated noise/silence on the Evaluation Version is now gone.

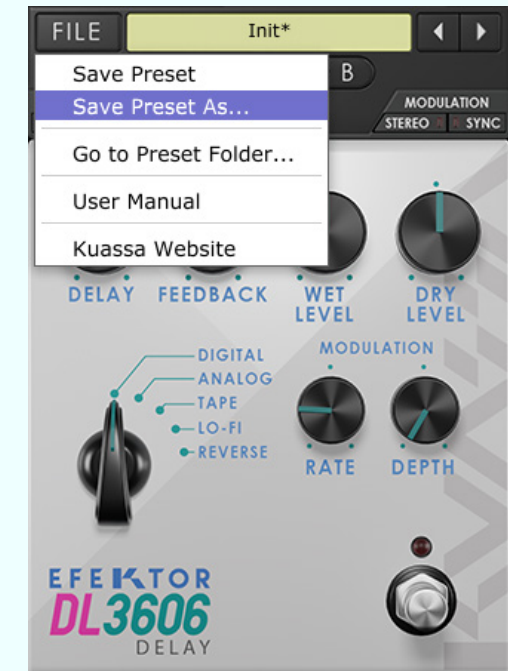
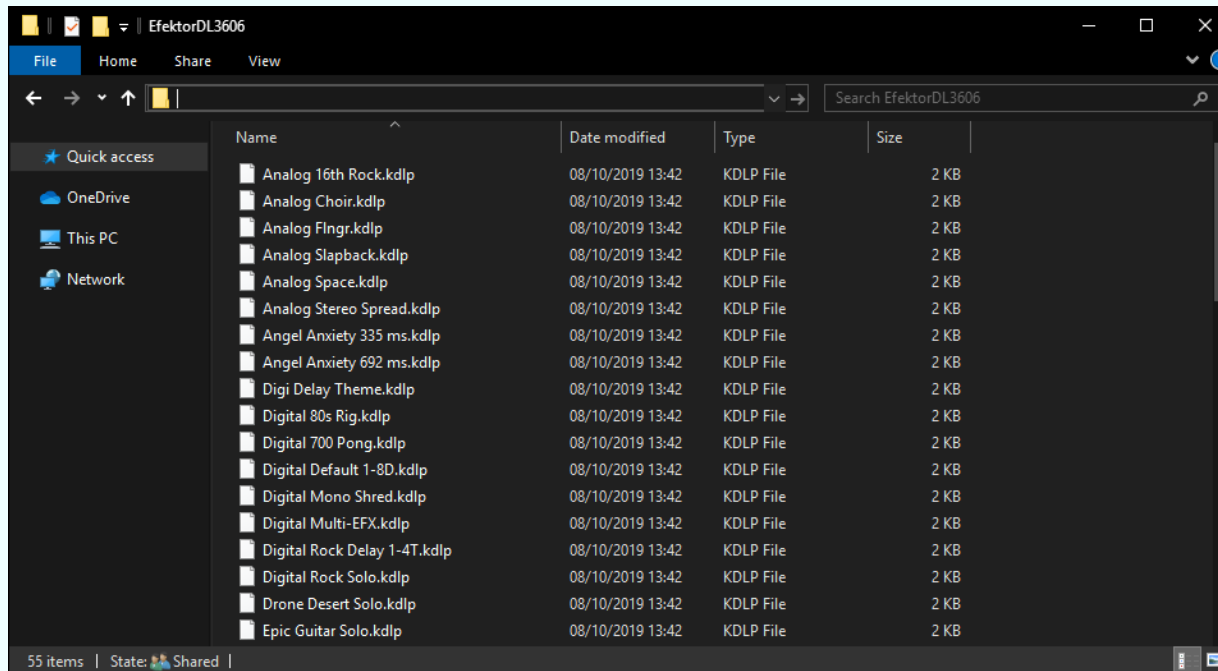


# Function



- 1 [FILE] BUTTON: The Menu button contains several functions; preset saving, and shortcuts to the user manual and Kuassa website.
- 2 PRESET SELECTOR: Select from available Presets, press left-right buttons or select from drop down menu.
- 3 A-B COMPARE: Compares two different settings of the effect.
- 4 COPY A to B: Copies settings from the "A" state to the "B" state or vice versa.
- 5 DELAY SETTING: SYNC: When set to On, delay time follows the host's tempo.
- 6 DELAY SETTING: PONG: When set to On, enables the ping-pong mode. The repeats alternate between left and right channel.
- 7 MODULATION SETTING: STEREO: When set to On, LFO modulates left channel in the opposite direction to right channel
- 8 MODULATION SETTING: SYNC: When set to On, oscillation follows the host's tempo.
- 9 DELAY: Sets the delay time in ms. When Sync is enabled, it follows the host's tempo in BPM.
- 10 FEEDBACK: Sets the amount of signal that is sent back to the effect unit.
- 11 WET: Controls the level of delayed signal.
- 12 DRY: Control the level of original signal.
- 13 TYPE SELECTOR: Select from five types of delay types within the device, each comes with different characteristic, and tone.
- 14 RATE: Controls the speed of modulation. When Sync is enabled, it follows the host's tempo in BPM.
- 15 DEPTH: Controls the height or amplitude of the modulation.
- 16 EFEKTOR LOGO: Click to show the About Box.
- 17 LIGHT INDICATOR: Light blinking follows the delay time.
- 18 BYPASS: Turns the effect unit completely On or Bypass.

# Preset Management



1 Presets for EFEKTOR Plug-in(s) are located in the following folders\*:

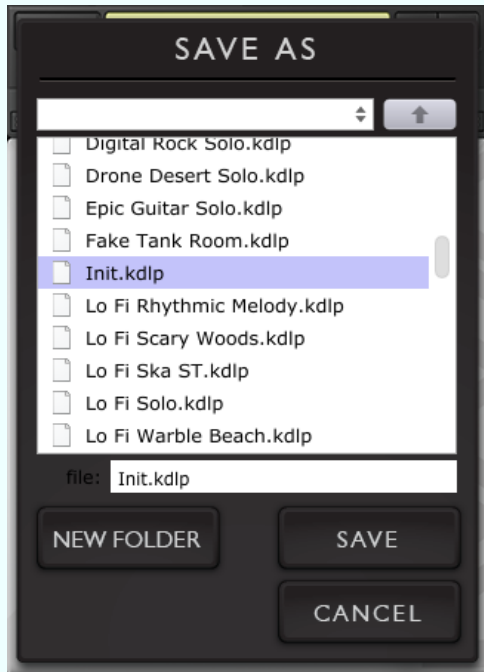
- Mac: Users/[YourName]/Music/Kuassa/Presets/EfektorDL3606
- Win: ~\Documents\Kuassa\Presets\EfektorDL3606

All presets inside these folders will be recognized by the plugin as individual presets, you can also create a folder to group the preset(s). They will thus be shown on the EFEKTOR Plug-in's preset selector.

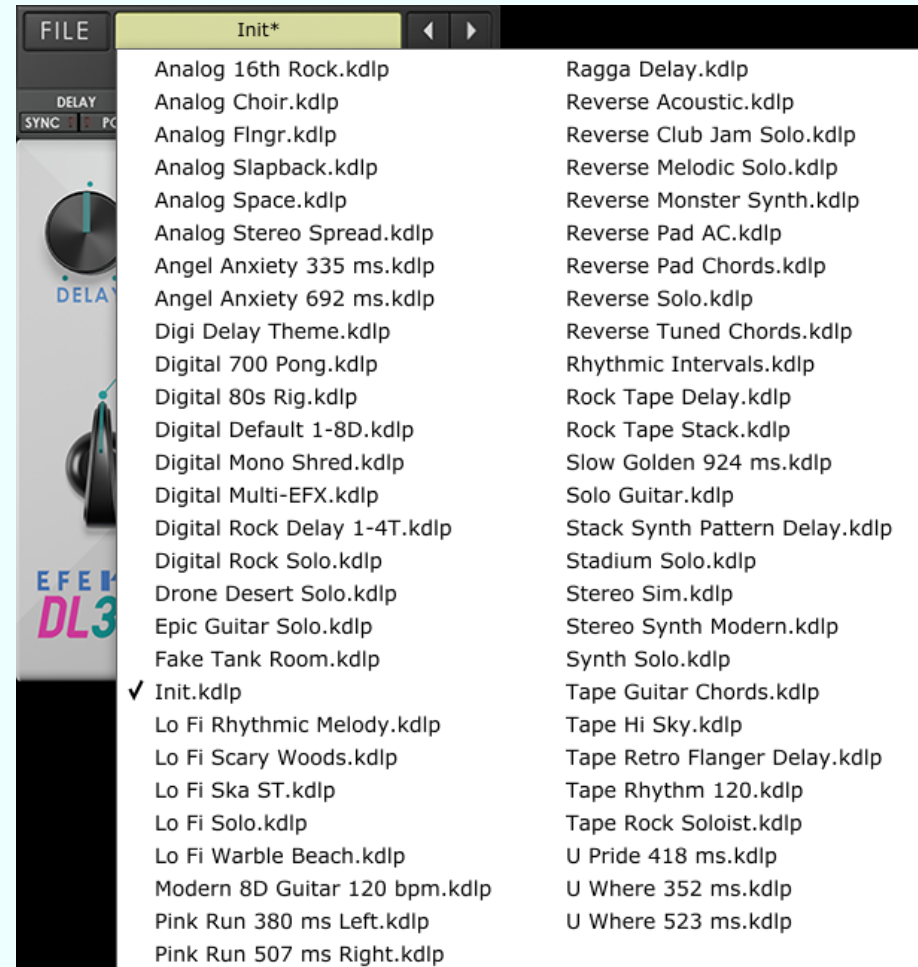
2 To save a preset, set your plugin to the desired parameter settings, then select:

- "Save Preset": Overwrites currently active preset.
- "Save Preset As": Saves current settings into a new preset file (\*.kdlp for DL3606).

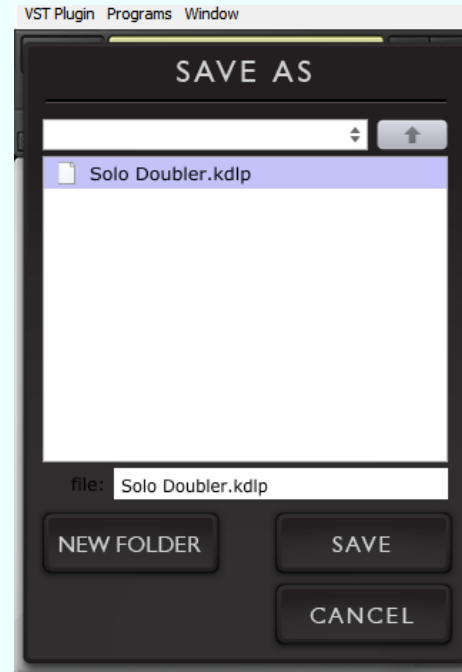
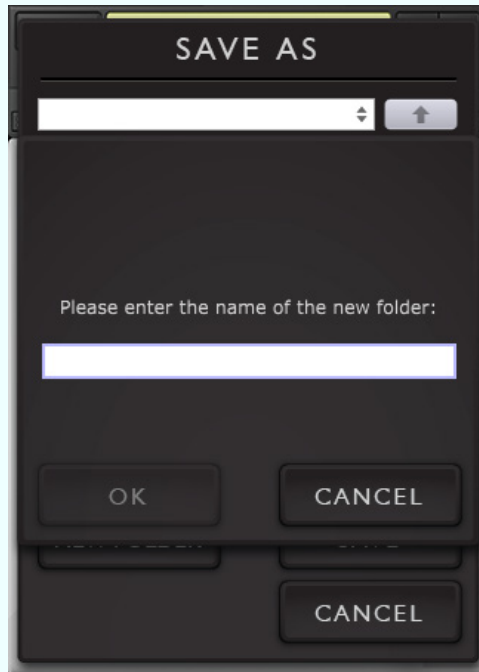
# Preset Management



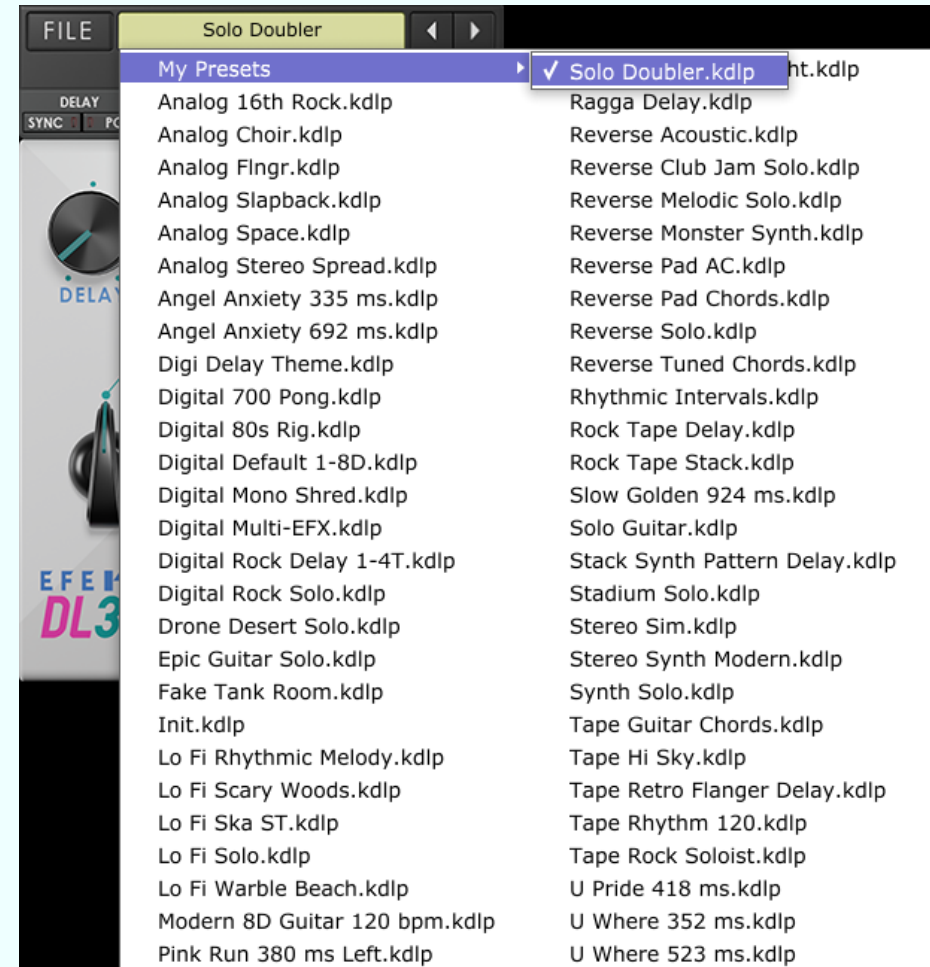
- 3 When you create a new preset using "Save Preset As...", make sure that you have chosen the correct preset folder as aforementioned on point 1 above to make sure that it will be recognized automatically by EFEKTOR plug-ins.



# Preset Management



- 4 To add new additional preset banks, create a new folder by clicking “New Folder” button and rename it. Sub-folders are also recognized to manage presets into groups, useful to manage additional preset bank, or grouping presets based by their use.



# EFEKTOR DL3606

DELAY





# Function



## 1 BYPASS

Turns on, off or bypass the rack extension.

## 2 TYPE SELECTOR

There are multiple fx models emulated within the device, each comes from different era, with different flavor, and character. Pick one which suited your desired sound.

## 3 DELAY & MODULATION SETTING

DELAY SETTING: SYNC: When set to On, delay time follows the host's tempo.

DELAY SETTING: PONG: When set to On, enables the ping-pong mode. The repeats alternate between left and right channel.

MODULATION SETTING: STEREO: When set to On, LFO modulates left channel in the opposite direction to right channel.

MODULATION SETTING: SYNC: When set to On, oscillation follows the host's tempo.

## 4 DELAY

Sets the delay time in ms. When Sync is enabled, it follows the host's tempo in BPM.

## 5 FEEDBACK

Sets the amount of signal that is sent back to the effect unit.

## 6 WET LEVEL

Controls the level of delayed signal.

## 7 DRY LEVEL

Control the level of original signal.

## 8 RATE

Controls the speed of modulation. When Sync is enabled, it follows the host's tempo in BPM.

## 9 DEPTH

Controls the height or amplitude of the modulation.

## 10 LIGHT INDICATOR

Light blinking follows the delay time.

## 11 ADDITIONAL BYPASS SWITCH

Turns the effect unit completely On or Bypass.

# Function



## 1 CV INPUTS

### CV INPUT SOCKET:

Receives incoming CV message for controlling each of EFEKTOR's CV control enabled parameters from another device's CV output.

### CV INPUT TRIM:

Turn counter-clockwise for each corresponding input to trim or reduce the intensity of incoming CV message.

## 2 AUDIO INPUT AND OUTPUT SOCKETS :

Please note that EFEKTOR is an FX, and should always be added as FX device instead of instrument.

### MIDI CC PARAMETER LIST (PROPELLERHEAD REASON)



● CC  
● PARAMETER NAME

128 = ONBYPASS  
129 = DELAYTYPE  
130 = PINGPONGON  
131 = DELAYSYNCON  
132 = DELAY  
133 = DELAYSYNCON  
134 = FEEDBACK  
135 = STEREOGAIN  
136 = RATESYNCON  
137 = RATE  
138 = RATESYNCON  
139 = DEPTH  
140 = WETLEVEL  
141 = DRYLEVEL

## **Kuassa Efektor Series Created by:**

**Muhammad Abduh  
Abshar Platisza  
Muhammad Yusreza Irsyan  
Intan Zariska Daniyanti  
Iman Firman Amarullah  
Juan Prahamma Hartjamt  
Dimitar Nalbantov  
Arie Ardiansyah  
Raden Pratama Kusuma  
Adhitya Sulistia Wibisana  
Bramantyo Ibrahim  
Cil Satriawan  
Grahadea Kusuf  
Iqbal Ansyori  
Rathomi Trinugraha  
Bayu Ardianto  
Sundawan Sukmaya**

## **Presets and Audio Demos by:**

**Dimitar Nalbantov (<http://www.nalbantov.com>)**



# EFEKTOR DL3606 DELAY

## KUASSA TEKNIKA, PT

Jl. Dipati Ukur No. 71A

Bandung 40132

West Java, INDONESIA

<https://www.kuassa.com>

General inquiry: [info@kuassa.com](mailto:info@kuassa.com)

### TECHNICAL SUPPORT :

[support@kuassa.com](mailto:support@kuassa.com)



A Product of KUASSA. Bandung, West Java. Indonesia  
© 2010-2022 PT Kuassa Teknika

Kuassa and Efektor DL3606 are trademarks of PT Kuassa Teknika, Indonesia.

All other commercial symbols, product and company names are trademarks or registered trademarks of their respective holders.

All rights reserved.