

EVE-AT1





EVE-AT1

THANK YOU FOR CHOOSING KUASSA PRODUCTS!

WE ENCOURAGE YOU TO TAKE THE TIME TO READ THIS USER MANUAL THOROUGHLY TO ENSURE TROUBLE FREE AND PROPER OPERATION OF THE SOFTWARE.

The Kuassa EVE-AT 1 consists of two individual EQs inspired by the design of the legendary Neve* 1081 and 1084 that are known for their clear, smooth, and very musical characteristics. We are thrilled by the sound and present these EQs as a modern tribute to one of the most influential audio tools ever created.

EVE-AT1 is a 4-band parametric equalizer with an additional high-pass and low-pass filter. Inspired by the EQ section of a renowned British Classic –the Neve*1081 –this equalizer delivers a clear, smooth, and musical sound to shape your tracks. The EVE-AT1 possess an additional parametric band with expanded Q bandwidth selection in the low-mid and high-mid frequency ranges as compared to the EVE-AT4. In addition, the AT1 implements a different high-pass and lowpass filter, giving the AT1 a slightly more conventional frequency response in these areas. These characteristics mean the EVE-AT1 is suitable for a broad range of musical applications, offering flexibility, versatility and all-round utility.

***Disclaimer :**

All trademarks are the property of their respective owners which are in no way associated or affiliated with Kuassa. The manufacturer names and model designations are used solely to identify the products whose tonal and sound characteristics were studied during development.



KEY FEATURES:

- Approximately +/-18dB (Narrow Q), and +/-12 dB (Broad Q).
- Selectable broad/narrow Q bandwidth.
- Selectable shelf/peak filter mode.
- HP & LP, -18 dB/octave.
- Output trim.

SYSTEM REQUIREMENTS

Windows:

Windows Vista or Later (64 bit)

Core2 Duo, or AMD Phenom ii X4 or better (latest Intel i3, AMD A4, or better is recommended) with 4GB minimum RAM

VST or VST3 compatible host/DAW

Pro Tools 11 or later for AAX format

Propellerhead Reason 7.1 or later for Rack Extension format

Macintosh:

Mac OSX 10.11 or later (64 Bit).

Core2 Duo, or better (latest Intel i3 recommended) with 4GB minimum RAM

Native Apple Silicon support

VST, VST3, or Audio Units compatible host/DAW

Pro Tools 11 or later for AAX format

Propellerhead Reason 7.1 or later for Rack Extension format

**Disclaimer :*

All trademarks are the property of their respective owners which are in no way associated or affiliated with Kuassa. The manufacturer names and model designations are used solely to identify the products whose tonal and sound characteristics were studied during development.

Installation

MAC OSX 10.11 OR LATER

Note for MacOS X users: you will be asked for your password upon installation.

For Mac installer(.pkg) format, double-click the installer and follow the instructions. The installer automatically point to your Mac's default VST/VST3/AU/AAX plug-ins and Standalone path (see below). Alternatively you can customize the installation target to specific folder.

Here are the default folders installation path for each of our supported platforms in Mac OSX:

- Mac Audio Unit (EVE-AT1.component) : /Library/Audio/Plug-Ins/Components/
- Mac VST (EVE-AT1.vst) : /Library/Audio/Plug-Ins/VST/Kuassa/
- Mac VST3 (EVE-AT1.vst3) : /Library/Audio/Plug-Ins/VST3/
- Mac AAX (EVE-AT1.aaxplugin) : /Library/Application Support/Avid/Audio/Plug-Ins/

WINDOWS VISTA OR LATER

For Windows Installer (.exe), double-click the installer and follow the instructions. The installer automatically points to your system's default plugins path (see below). Alternatively you can point the installation target to specific folder. Most VST host already have a "Plugins" or "VSTplugins" folder inside its installation directory, or you can point the host to read any folder you choose.

Here are the default folders installation path for each of our supported platforms:

- Windows 64-bit VST (EVE-AT1.dll) : C:\Program Files\Steinberg\VstPlugins\Kuassa\
- Windows 64-bit VST3 (EVE-AT1.vst3) : C:\Program Files\Common Files\VST3\
- Windows 64-bit AAX (EVE-AT1.aaxplugin) : C:\Program Files\Common Files\Avid\Audio\Plug-Ins\

Uninstallation

MAC OSX 10.11 OR LATER

On a Mac, simply delete the plug-in located on the corresponding Plug-ins folder, and delete other folders and file resources located at,

Folders:

- /Library/Application Support/Kuassa/Default Presets/EVE-AT1/
- /Users/[User Name]/Music/Kuassa/Presets/EVE-AT1/

Files:

- /Library/Application Support/Kuassa/Misc/EVE-AT1 EULA.txt
- /Library/Application Support/Kuassa/User Manuals/EVE-AT1 Manual.pdf
- /Users/[User Name]/Music/Kuassa/Settings/EVE-AT1.setting

WINDOWS VISTA OR LATER

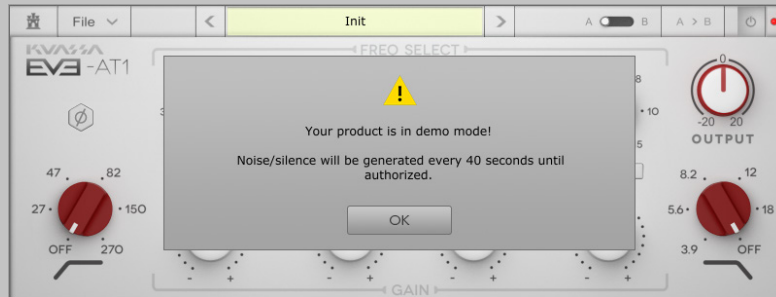
Use “Add/Remove programs” or “Programs and Features” from the Windows Control Panel. If EVE-AT1 does not listed, delete the .dll/.vst3/.aaxplugin file from your VST plug-in folder. After Uninstallation, manually delete other EVE-AT1 file resources at, Folder:

- C:\Users\[User Name]\Documents\Kuassa\Presets\EVE-AT1\

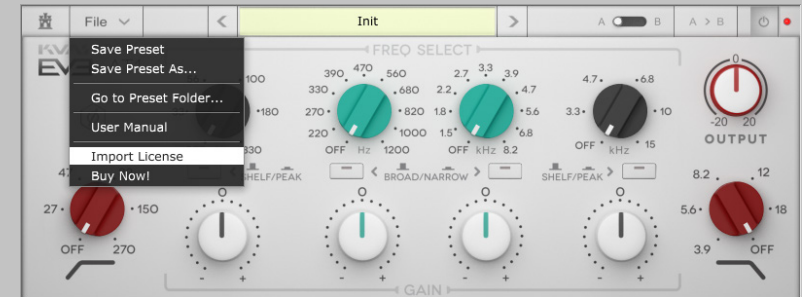
Files:

- C:\Users\[User Name]\Documents\Kuassa\Settings\EVE-AT1.setting

Authorization



- 1 On evaluation mode, you will see this pop-up window when you first start the plugin.

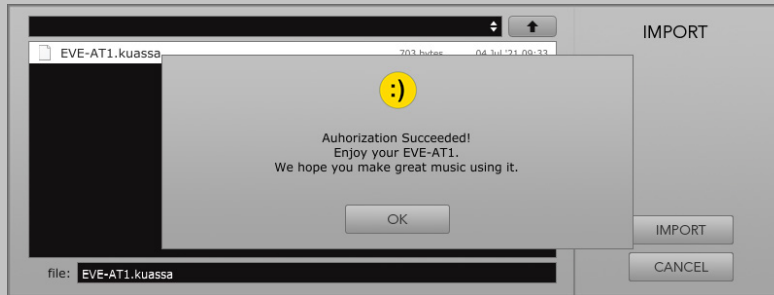


- 2 To start the authorization process, click the [File] button on the top-left of the plug-in's interface, there, you will find a selection box titled [import License].

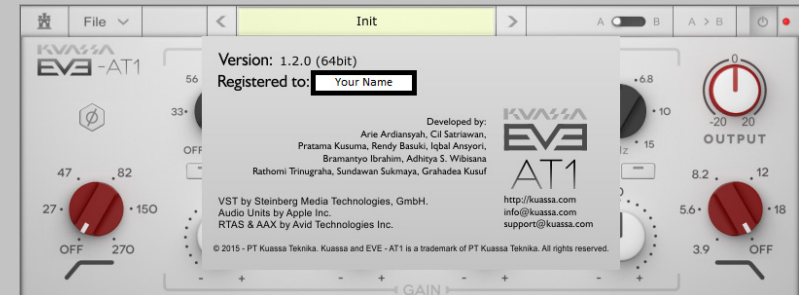


- 3 Locate the License File [EVE-AT1.kuassa] obtained from the confirmation e-mail sent to you after you purchase EVE-AT1 Plug-in(s) from our web store or downloaded from member area.
Note that the License File contains your personal information used to authorize the plug-in.

(Cont'd) Authorization



- 4 After you locate the License File, a pop-up box confirming that you are successfully authorize your plug-in will show.



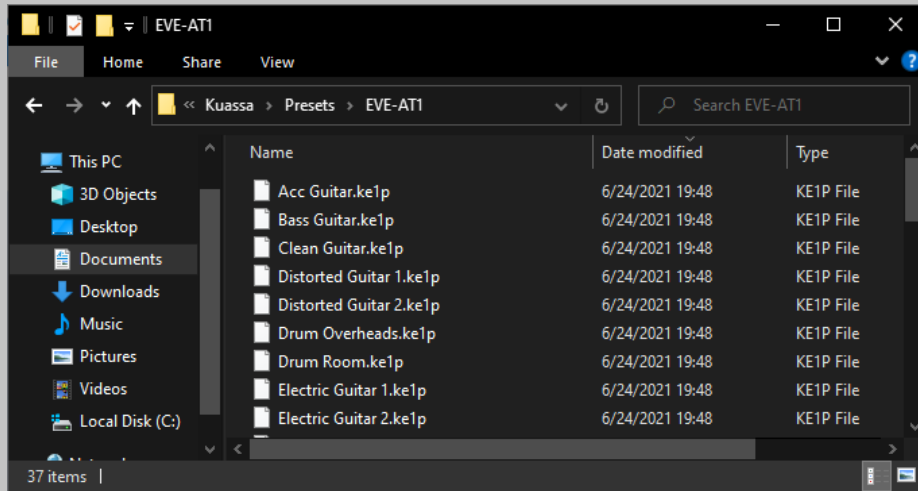
- 5 To check if you have completed the authorization process, just simply load the About Box by clicking the EVE-AT1 logo on the bottom left corner. If your authorization is successful, either your name or your e-mail address will be shown on the About Box. You will also notice that the generated noise/silence on the Evaluation Version is now gone.

Function



- 1 Kuassa "Castle" Logo: Click to show the About Box.
- 2 File] button: The Menu button contains several functions; preset saving, license file authorization, and shortcuts to the user manual and Kuassa website.
- 3 Preset Selector: Select from available Presets, press left-right buttons or select from drop down menu.
- 4 A-B Compare: Compare two different settings of the EQ.
- 5 Copy A to B: Copy settings from the "A" state to "B" state
- 6 EQ Power Button: Turns the EQ on or off.
- 7 Phase button: Click to flip the phase of the output 180 degrees SECTION.
- 8 Frequency Selector with Q Mode button: select the center frequency to be modified, each has a corresponding Q button (broad/narrow) and (shelf/peak) for the outer knobs.
- 9 Output Trim: Increase or decrease the track output volume after equalization.
- 10 High Pass Filter: Five cut off points, 18 dB/octave low-cut filter. Any frequency below the cut off point will be decreased.
- 11 Q Toggle Buttons: Changes the shape / Q value of the corresponding frequency.
- 12 Frequency Gain: Boost or cut the corresponding frequency, approximately +/-18 dB for Narrow Q, and +/-12 dB for Broad Q.
- 13 Low Pass Filter: Five cut off points, 18 dB/octave high-cut filter. Any frequency above the cutoff point will be decreased.

Preset Management



1 Presets for EVE-AT1 Plug-in(s) are located in the following folders*:

- Mac: Users/[YourName]/Music/Kuassa/Presets/EVE-AT1
- Win: ~\Documents\Kuassa\Presets\EVE-AT1

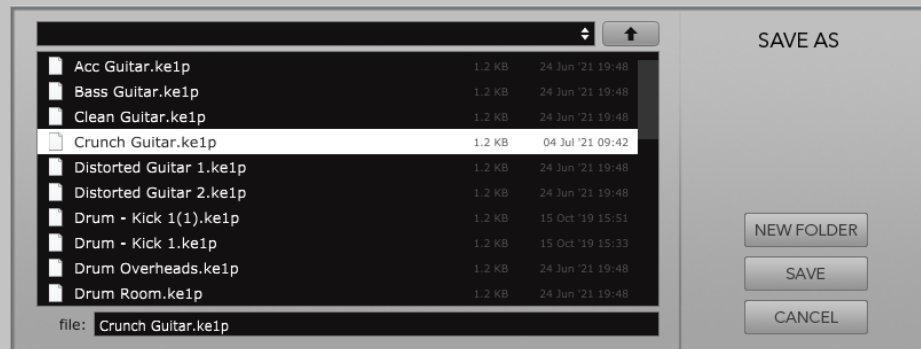
All presets inside these folders will be recognized by the plugin as individual presets, you can also create a folder to group the preset(s). They will thus be shown on the EVE-AT1 Plug-in's preset selector.



2 To save a preset, set your plugin to the desired parameter settings, then select:

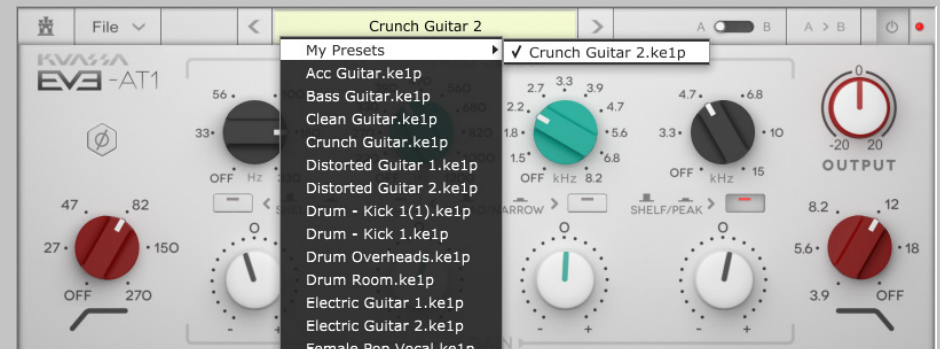
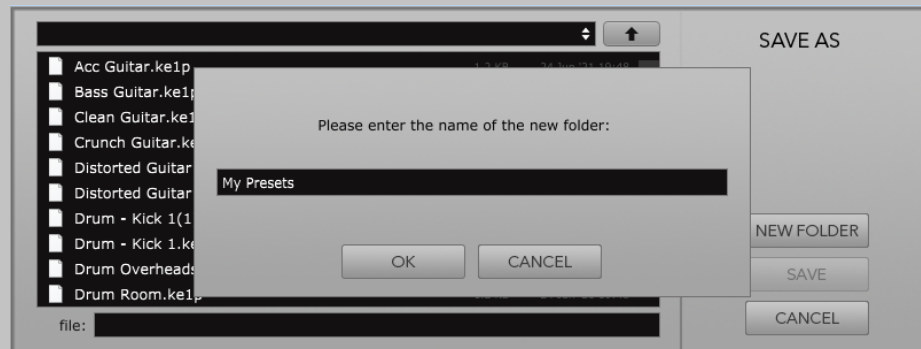
- "Save Preset": Overwrites currently active preset.
- "Save Preset As": Saves current settings into a new preset file (*.ke1p for EVE-AT1).

Preset Management



- 3 When you create a new preset using “Save Preset As...”, make sure that you have chosen the correct preset folder as aforementioned on point 1 above to make sure that it will be recognized automatically by EVE-AT1 plug-ins.

Preset Management



- 4 To add new additional preset banks, create a new folder by clicking "New Folder" button and rename it. Sub-folders are also recognized to manage presets into groups, useful to manage additional preset bank, or grouping presets based by their use.

EVE-AT1



Function



- 1 Bypass Slider: Turns the EQ on, off, or bypass.
- 2 Preset Selector: Select from available Presets, press left-right buttons or select from drop down menu.
- 3 Phase button: Click to flip the phase of the output 180 degrees SECTION.
- 4 Output Trim: Increase or decrease the track output volume after equalization.
- 5 High Pass Filter: Five cut off points, 18 dB/octave low-cut filter. Any frequency below the cut off point will be decreased.
- 6 Frequency Selector with Q Mode button: select the center frequency to be modified, each has a corresponding Q button (broad/narrow) and (shelf/peak) for the outer knobs.
- 7 Q Toggle Buttons: Changes the shape / Q value of the corresponding frequency.
- 8 Frequency Gain: Boost or cut the corresponding frequency, approximately +/-18 dB for Narrow Q, and +/-12 dB for Broad Q.
- 9 Low Pass Filter: Five cut off points, 18 dB/octave high-cut filter. Any frequency above the cutoff point will be decreased.

Function



1 CV INPUTS

CV INPUT SOCKET:

Receives incoming CV message for controlling each of EVE-AT1's CV control enabled parameters from another device's CV output.

CV INPUT TRIM:

Turn counter-clockwise for each corresponding input to trim or reduce the intensity of incoming CV message.

2 AUDIO INPUT AND OUTPUT SOCKETS :

Please note that EVE-AT1 is an FX, and should always be added as FX device instead of instrument.

MIDI CC PARAMETER LIST (PROPELLERHEAD REASON)

● CC
● PARAMETER NAME

[131] = LOWCUTFREQ
[132] = LOWFREQ
[133] = LOWSHELFPEAK
[134] = LOWGAIN
[135] = LOWMIDFREQ
[136] = LOWMIDQ
[137] = LOWMIDGAIN
[138] = HIGHMIDFREQ

[139] = HIGHMIDQ
[140] = HIGHMIDGAIN
[141] = HIGHFREQ
[142] = HIGHSELFPEAK
[143] = HIGHGAIN
[144] = HIGHCUTFREQ
[145] = PHASEON
[146] = OUTPUTVOL

Kuassa EVE-AT1 Created by:

**Muhammad Abduh
Abshar Platisza
Muhammad Yusreza Irsyan
Intan Zariska Daniyanti
Iman Firman Amarullah
Juan Prahamma Hartjamt
Dimitar Nalbantov
Arie Ardiansyah
Raden Pratama Kusuma
Adhitya Sulistia Wibisana
Bramantyo Ibrahim
Cil Satriawan
Grahadea Kusuf
Iqbal Ansyori
Rathomi Trinugraha
Bayu Ardianto
Sundawan Sukmaya**

Presets and Audio Demos by:

Dimitar Nalbantov (<http://www.nalbantov.com>)

EVE-AT1

KUASSA TEKNIKA, PT

Jl. Dipati Ukur No. 71A

Bandung 40132

West Java, INDONESIA

<https://www.kuassa.com>

General inquiry: info@kuassa.com

TECHNICAL SUPPORT :

support@kuassa.com



A Product of KUASSA. Bandung, West Java. Indonesia
© 2010-2022 PT Kuassa Teknika

Kuassa and EVE-AT1 are trademarks of PT Kuassa Teknika, Indonesia.

All other commercial symbols, product and company names are trademarks or registered trademarks of their respective holders.

All rights reserved.