



**THANK YOU FOR CHOOSING A PRODUCT FROM KUASSA!**  
**WE ENCOURAGE YOU TO TAKE A TIME TO READ THIS USER MANUAL THOROUGHLY**  
**TO ENSURE TROUBLE FREE AND PROPER OPERATION OF THE SOFTWARE.**

Are there any numbers that are closely related to heavy music? Other than the number of the beast, it's probably this sequence of numbers: 51 and 50. Named after the signature of the legendary guitarist, an inventor who inspire many which later comes alive as the acclaimed model of 5XXX signature guitar amplifier which delivers a very specific kind of guitar tone, dubbed as the "brown sound". The amp has become a staple of metal sound. It's all over every album that had a crushing and distorted guitar such as the ones from Machine Head\*, Opeth\*, Testament\*, Trivium\*, Gojira\*, and so many others!

Powered by our 3rd generation tube engine, Kuassa recreates and tweaks all three major versions of the 5XXX amps to deliver the infamous brown sound that blasts like nothing else in your DAW, the Amplifikation VVV.

**Amp Type Descriptions:**

**Type A, Mark I:** Beautiful and rich clean channel, ideal for dreamy ballads or softer passage. Works great with PAF type pickups. Crazy Good Crunch Channel and Tight Lead Channel with 80s flavor.

**Type B, Mark II:** Thick and full midrange with tight low end that delivers the famous brown sound. Great for crunchy and dynamic rhythm tones. 70's British tones are the first sound that comes to mind.

**Type C, Mark III:** Deep and aggressive with monstrous gain that will please all metalheads. On maximum gain, some will say that it's out of control. A must for modern productions.

"The amp works great with single coils or low gain Paf type pickups, but it cuts like chain saw with active pickups too!"

*\*Disclaimer :*

*All trademarks are the property of their respective owners which are in no way associated or affiliated with Kuassa. The manufacturer names and model designations are used solely to identify the products whose tonal and sound characteristics were studied during development.*



## KEY FEATURES:

Key Features :

- NEW! Resizable window.
- NEW! Many improvements for the user interface.
- Sag and Bias feature on the power amp section.
- Low pass and high pass filters.
- Five types of cabinets with impulse responses taken from genuine Peavey\* cabinets.
- Nine types of workhorse mics: Shure SM57\*, Sennheiser MD421\*, Sennheiser MD441\*, Sennheiser e609\*, Beyerdynamic M201\*, Shure KSM 353\*, Royer 121\*, AKG C414\*, Neumann TLM103\*.
- Freely adjustable dual-miking configurations with mono or stereo configuration, just like a real-life guitar recording session with mix option.
- Built-in Noise Gate and Limiter.
- Straightforward and easy to use interface.
- Supports up to 8x Oversampling.



## SYSTEM REQUIREMENTS

Windows:

Windows Vista or Later (64 bit)

Core2 Duo, or AMD Phenom ii X4 or better (latest Intel i3, AMD A4, or better is recommended) with 4GB minimum RAM

VST or VST3 compatible host/DAW

Pro Tools 11 or later for AAX format

Propellerhead Reason 10.1 or later for Rack Extension format

Macintosh:

Mac OS 10.11 or later (64 Bit).

Core2 Duo, or better (latest Intel i3 recommended) with 4GB minimum RAM

Native Apple Silicon support

VST, VST3, or Audio Units compatible host/DAW

Pro Tools 11 or later for AAX format

Propellerhead Reason 10.1 or later for Rack Extension format

*\*Disclaimer :*

*All trademarks are the property of their respective owners which are in no way associated or affiliated with Kuassa. The manufacturer names and model designations are used solely to identify the products whose tonal and sound characteristics were studied during development.*

# Installation

## MAC OS 10.11 OR LATER

Note for MacOS users: you will be asked for your password upon installation.

For Mac installer(.pkg) format, double-click the installer and follow the instructions. The installer automatically point to your Mac's default VST/VST3/AU/AAX plug-ins and Standalone path (see below). Alternatively you can customize the installation target to specific folder.

Here are the default folders installation path for each of our supported platforms in Mac OS:

- Mac Audio Unit (AmplifikationVVV.component) : /Library/Audio/Plug-Ins/Components/
- Mac VST (AmplifikationVVV.vst) : /Library/Audio/Plug-Ins/VST/Kuassa/
- Mac VST3 (AmplifikationVVV.vst3) : /Library/Audio/Plug-Ins/VST3/
- Mac AAX (AmplifikationVVV.aaxplugin) : /Library/Application Support/Avid/Audio/Plug-Ins/
- Mac Standalone (AmplifikationVVV.app) : /Applications/Kuassa/

## WINDOWS VISTA OR LATER

For Windows Installer (.exe), double-click the installer and follow the instructions. The installer automatically points to your system's default plugins path (see below). Alternatively you can point the installation target to specific folder. Most VST host already have a "Plugins" or "VSTplugins" folder inside its installation directory, or you can point the host to read any folder you choose.

Here are the default folders installation path for each of our supported platforms:

- Windows 64-bit VST (AmplifikationVVV.dll) : C:\Program Files\Steinberg\VstPlugins\Kuassa
- Windows 64-bit VST3 (AmplifikationVVV.vst3) : C:\Program Files\Common Files\VST3
- Windows 64-bit AAX (AmplifikationVVV.aaxplugin) : C:\Program Files\Common Files\Avid\Audio\Plug-Ins
- Windows 64-bit Standalone (AmplifikationVVV.exe) : C:\Program Files\Kuassa

# Uninstallation

## MAC OSX 10.11 OR LATER

On a Mac, simply delete the plug-in located on the corresponding Plug-ins folder, and delete other folders and file resources located at,

Folders:

- /Library/Application Support/Kuassa/Libraries/Cabinets/
- /Library/Application Support/Kuassa/Libraries/LookUpTables/
- /Library/Application Support/Kuassa/Default Presets/AmplifikationVVV/
- /Users/[User Name]/Music/Kuassa/Presets/AmplifikationVVV/

Files:

- /Library/Application Support/Kuassa/Misc/AmplifikationVVV EULA.txt
- /Library/Application Support/Kuassa/User Manuals/AmplifikationVVV Manual.pdf
- /Users/[User Name]/Music/Kuassa/Settings/AmplifikationVVV.setting
- /Users/[User Name]/Library/Application Support/Kuassa/AmplifikationVVV.settings

## WINDOWS VISTA OR LATER

Use “Add/Remove programs” or “Programs and Features” from the Windows Control Panel. If Amplifikation VVV does not listed, delete the .dll/.vst3/.aaxplugin file from your VST plug-in folder. After Uninstallation, manually delete other Amplifikation VVV file resources at,

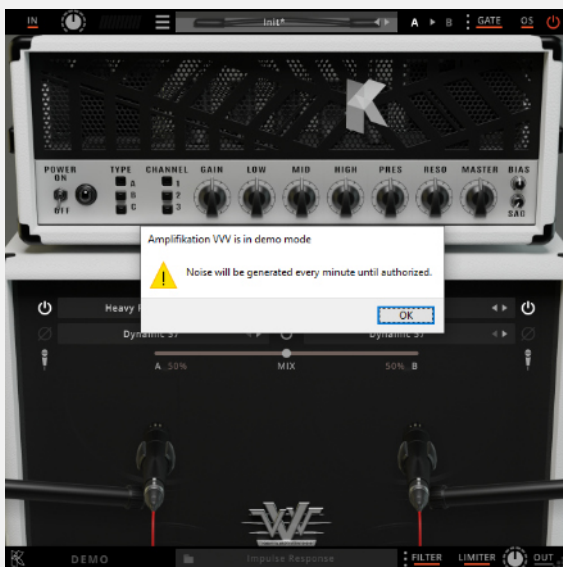
Folder:

- C:\Users\[User Name]\Documents\Kuassa\Presets\AmplifikationVVV\

Files:

- C:\Users\[User Name]\Documents\Kuassa\Settings\AmplifikationVVV.setting
- C:\Users\[User Name]\AppData\Roaming\Kuassa\AmplifikationVVV.settings

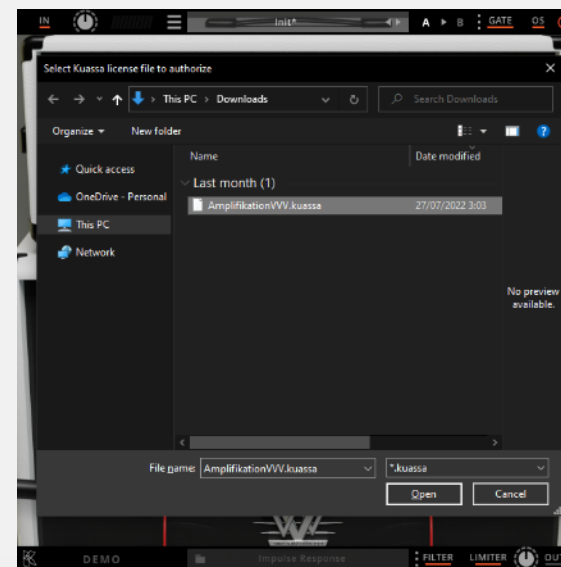
# Authorization



1 On evaluation mode, you will see this pop-up window when you start Amplifikation VVV for the first time.



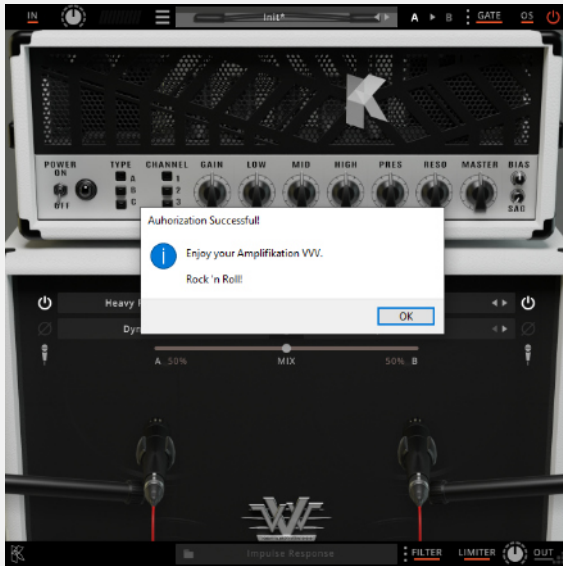
2 To start the authorization process, click the [File] button on the top-left of Amplifikation VVV Interface, there, you will find a selection box titled [Import License].



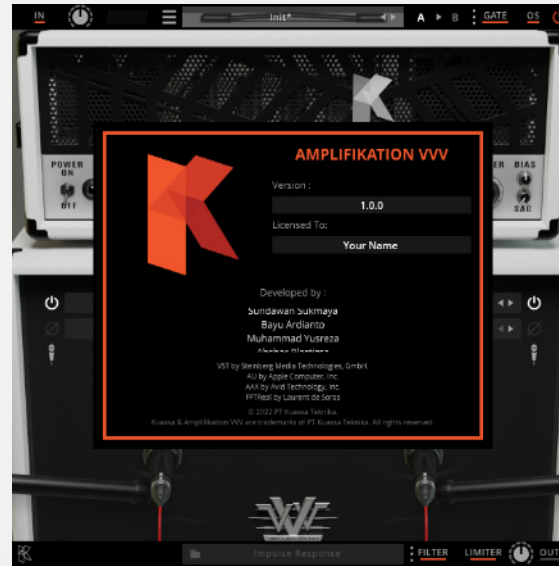
3 Locate the License File [AmplifikationVVV.kuassa] obtained from the confirmation e-mail sent to you after you purchase Amplifikation VVV from our web store. Note that the License File contains your personal information used to authorize Amplifikation VVV.



# Authorization (Cont'd)

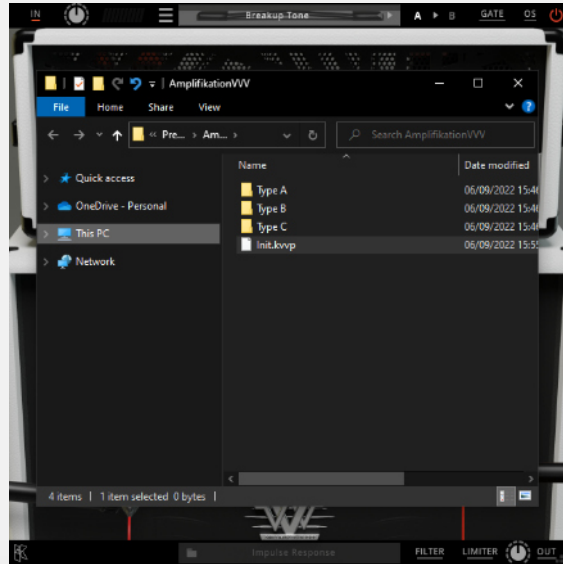


- 4 Right after you locate the License File, a pop-up box will appear confirming that you have successfully authorize your copy of Amplifikation VVV.



- 5 To check if you have completed the authorization process, just simply load the About Box by clicking the Kuassa logo on the bottom-left corner. If your authorization is successful, either your name or your e-mail address will be shown on the About Box. You will also notice that the generated noise on the Evaluation Version is now gone.

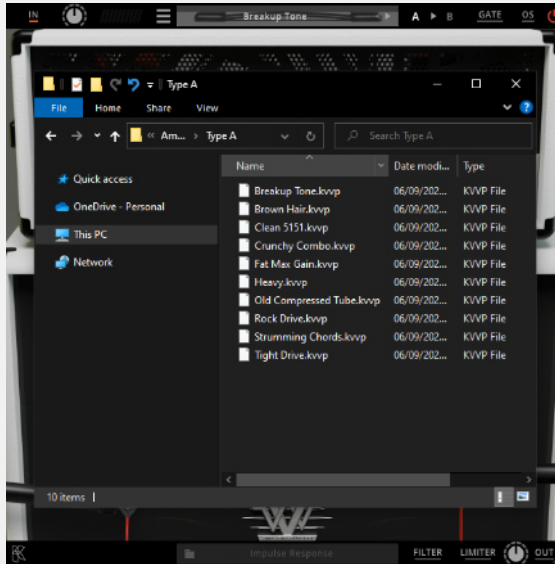
# Preset Management



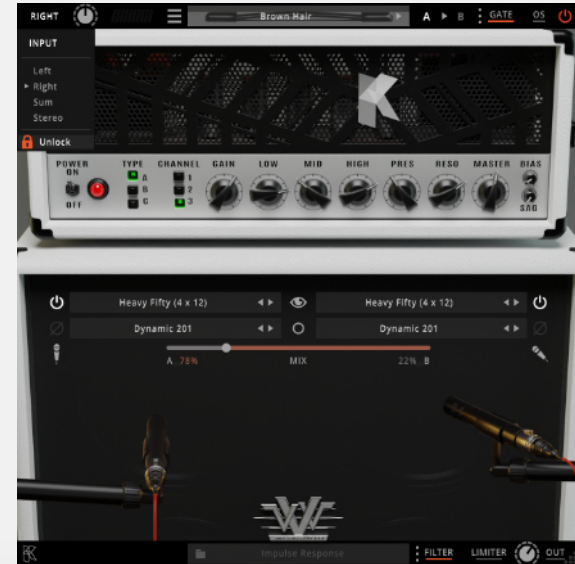
1

Presets for Amplifikation VVV Plug-in(s) are located in the following folders\*:

- Mac:  
/Users/[USERNAME]/Music/Kuassa/Presets/AmplifikationVVV
- Win:  
~\Documents\Kuassa\Presets\AmplifikationVVV



All presets inside these folders will be recognized by the plugin as individual presets, you can also create a folder to group the preset(s). They will thus be shown on the Amplifikation VVV Plug-in's preset selector.



2

Keep "Lock Input Channel" checked to set the input channel selector remain unchanged when you change presets.

*\* Please note that toggling this option won't be saved as preset parameter.*



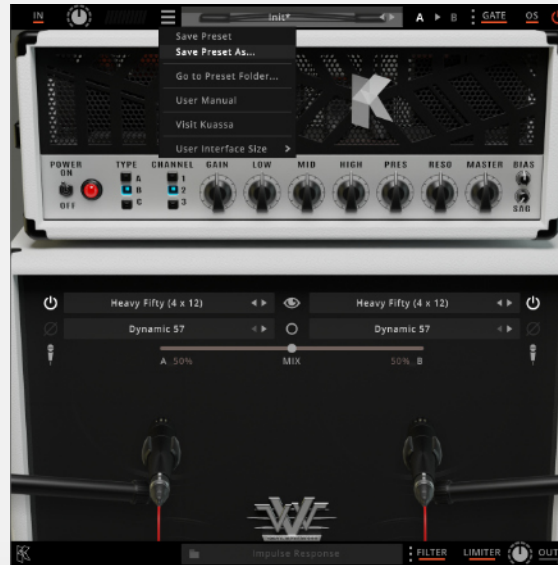
# Preset Management



3

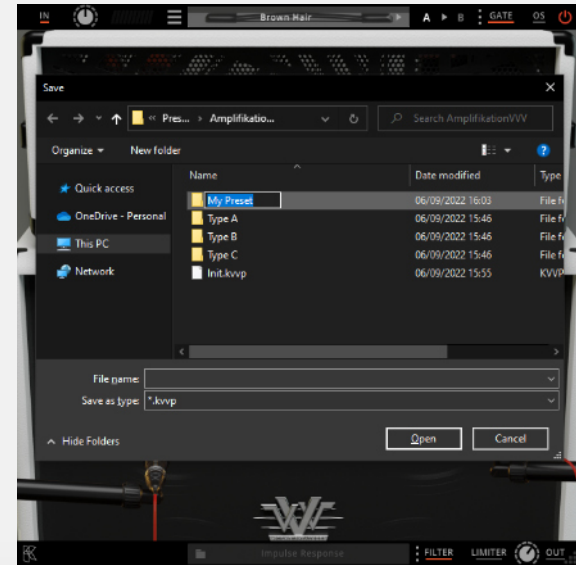
To save a preset, set your plugin to the desired parameter settings, then select:

- “Save Preset”: Overwrites currently active preset.
- “Save Preset As”: Saves current settings into a new preset file (\*.kvvp for Amplifikation VVV).

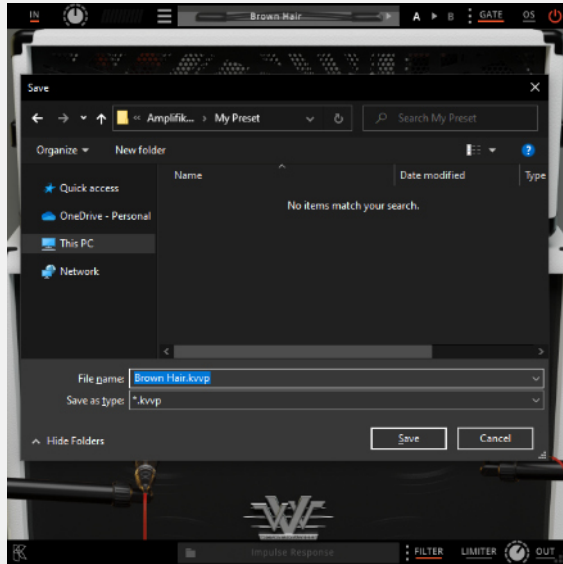


4

When you create a new preset using “Save Preset As...”, make sure that you have chosen the correct preset folder as aforementioned on point 1 above to make sure that it will be recognized automatically by Amplifikation VVV plug-ins.



# Preset Management



- 5 Sub-folders are also recognized to manage presets into groups, useful to manage additional preset bank, or grouping presets based by their use.

# Function



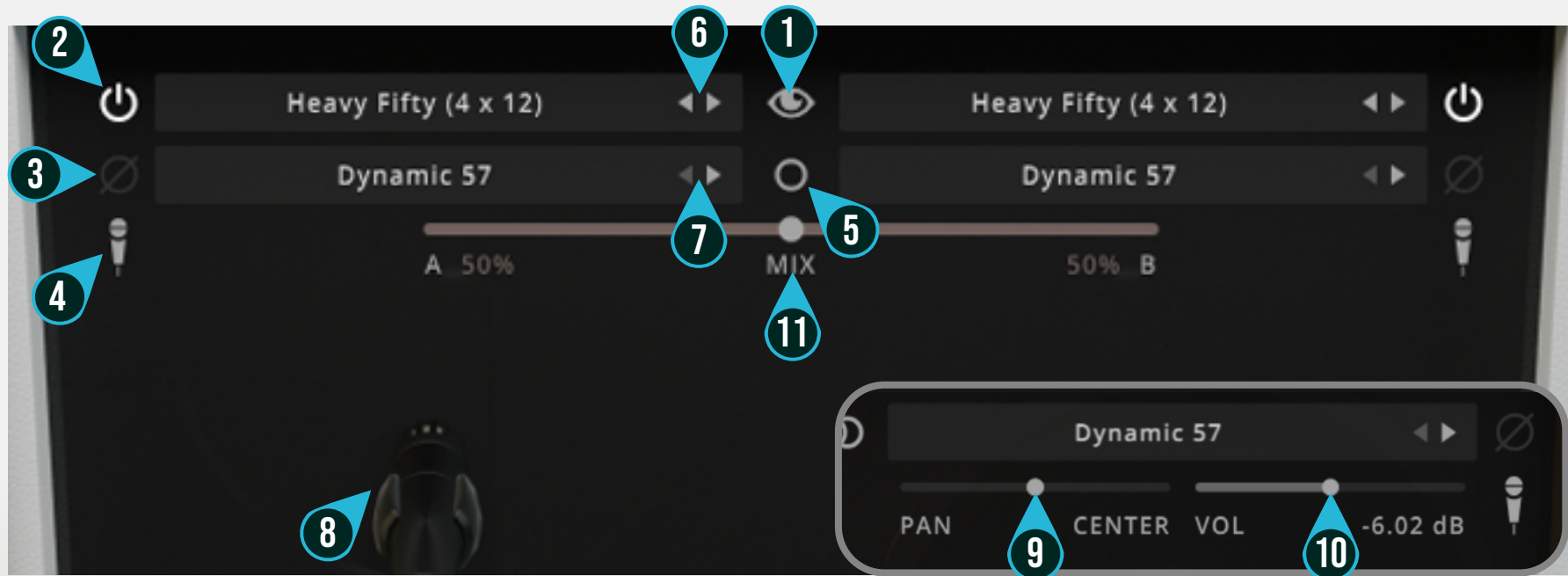
1. INPUT SELECTOR: Mouse hover to see current assignment. Click here to switch the incoming input signal channel from your soundcard. Left, Right, Stereo, or Sum L+R can be selected.
2. INPUT LEVEL: Controls the level of incoming signal. You may turn it up to the maximum without worrying of overloading the amp.
3. INPUT METER: Shows the level from your incoming signal.
4. FILE MENU: Includes option for following functions : Preset management/option, plug-in license authorization, user manual, and window size. and link to our website. Please refer to each corresponding section for more detailed instructions.
5. PRESET SELECTOR: Click to choose preset, or use the arrows to navigate between presets. The name of active preset will be displayed and an asterisk (\*) symbol will appear when the active preset has been modified.
6. LEFT-RIGHT ARROWS: Select next or previous preset.
7. A > B COMPARE: Compares two different settings of the Amp. Click the letters to switch settings and click the arrow to copy settings from A to B or vice versa.
8. GATE BUTTON: Click to enable or disable the Gate section. When enabled, the Gate underline will light up Red and will show the three dots menu button. Click the dots to show these parameters:
  - A.Threshold: Sets the minimum level where the Noise Gate will do its job. If the input signal level is below threshold, the noise gate will kick in by reducing the signal according to the Attack & Decay settings
  - B.Attack: Controls how quick the gate will open when the signal is above the threshold level.
  - C.Decay: Determines how quick the gate closes once the signal has fallen below the threshold level.
9. OS (OVERSAMPLING): Increases the internal sampling frequency to reduce aliasing artefacts at the cost of higher CPU usage. Mouse hover to see active oversampling. Click to select oversampling level. When active, the OS underline will light up red.
10. GLOBAL BYPASS: Turns on or off the whole plugin.




# Function



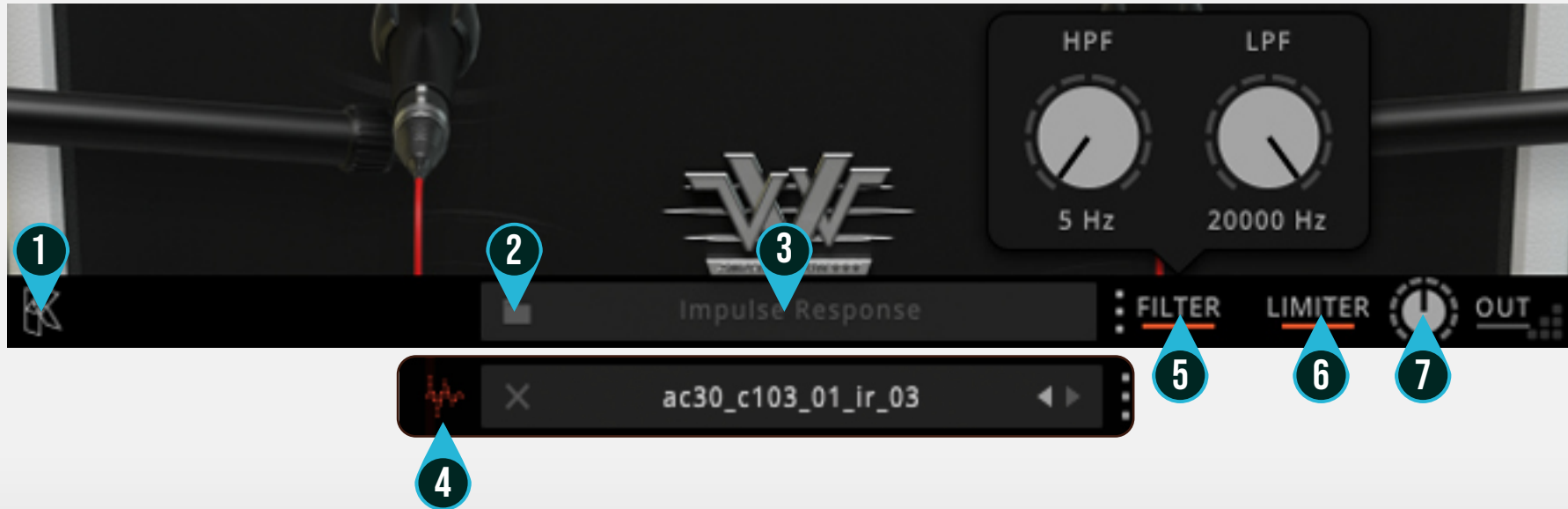
1. POWER : Turns the amp On or Off. If the amp is Off, the sound will go directly to the cabinets.
2. AMP TYPE  
Type A, Mark I: Beautiful and rich clean channel. Tight Lead Channel with 80s flavor.  
Type B, Mark II: Thick and full midrange with tight low end that delivers the famous brown sound.  
Type C:, Mark III: Deep and aggressive with monstrous gain that will please all metalheads.
3. CHANNEL : Select between three channels of each amp's model  
Channel 1: Clean. Inspired by the Green channel.  
Channel 2: Crunch. Inspired by the Blue channel.  
Channel 3: Lead. Inspired by the Red channel.
4. GAIN : Sets the input gain & the amount of distortion. Rotate clockwise for more distortion.
5. LOW : Adjusts the low frequency amount for the top boost channel.
6. MID : Adjusts the mid frequency amount for the top boost channel.
7. HIGH : Adjusts the high frequency amount for the top boost channel.
8. PRESENCE : Adjusts the presence level of the amp.
9. RESO: Resonance Control. Cuts low frequencies in the negative feedback loop of the power amp. Turn clockwise for beefier sound.
10. MASTER : Adjusts the output level from the amplifier.
11. BIAS : Sets the operating voltage of the tubes inside the amp.
12. SAG : Controls the amount of dropout/compression when a large signal and fast transient hits the power amp section

# Function



1. SHOW/HIDE BUTTON: Shows or hides the cabinet selector, mic selector, and the panning slider.
2. CABINET ON/OFF BUTTON : Enables or disables the particular cabinet.
3. PHASE BUTTON : Inverts the waveform polarity.
4. MIC ANGLE : Switches between straight or angled miking.
5. MONO/STEREO SELECTOR : Use this to toggle between mono or stereo cabinet modes.
6. CABINET SELECTOR : Choose from 5 models of speaker cabinets.
7. MIC SELECTOR : Provides 7 types of microphone to use.
8. MIC POSITION : Indicates the position of the microphone. Move it freely with your mouse. Double-click to reset to center position.
9. CABINET VOLUME KNOB (  Mode) : To adjust the volume of the corresponding cabinet. Parameter only shown in stereo mode.
10. CABINET PAN (  Mode) : To adjust the panning position of the corresponding cabinet. Parameter only shown in stereo mode.
11. CABINET MIX BALANCE (  Mode) : Adjusts mix volume balance between the left and right cabinets. Double-click on the slider to reset to center position.

# Function



1. KUASSA LOGO: Displays the About box
2. FOLDER ICON: Mouse hover on the impulse response display and click on this icon to load an external IR file.
3. IMPULSE RESPONSE DISPLAY: Shows active IR file name. Click here to show the IRs as a drop down menu. Click on the X button on the left to remove the IR.
4. RES : Impulse Response RESAMPLE. When turned on, the loaded IRs will be matched to the host's sample rate
5. FILTER MENU: Click to enable or disable the Filter section. When enabled, the Filter underline will light up Red and will show the three dots menu button. Click the dots to show the knobs for HPF (High Pass Filter) and LPF (Low Pass Filter) frequency.
6. LIMITER: Click to enable or disable the Output Limiter. When enabled, the Limiter underline will light up Red
7. GLOBAL OUTPUT LEVEL: Controls overall output level of the plugin





# Function



## TOP PANEL FUNCTIONS

1. **PLUGIN BYPASS BUTTON** : Turns on, off or bypass the rack extension device.
2. **INPUT LEVEL** : Controls the level of incoming signal. You may turn it to the maximum without worrying of overloading the amp.
3. **INPUT METER** : Shows the level of incoming signal. For optimal result, make sure the level reaches about 70-80% just before red indicator starting to light up.
4. **PRESET BROWSER**
5. **PRESET NAME DISPLAY**
6. **NOISE GATE ON/OFF** : Enables or disables the noise gate utility.
7. **NOISE GATE PARAMETERS** :
  - **THRESHOLD** : Sets the minimum level where the Noise Gate will do its job. If the input signal level is below threshold, the noise gate will kick in by reducing the signal according to the Attack & Decay settings.
  - **ATTACK** : This controls the time how quickly the gate will open when the signal is above the threshold level.
  - **DECAY** : Determines how quick the gate closes once the signal has fallen below the threshold level.
8. **FILTER ON/OFF** : Turn the filters On or Off.
9. **FILTER KNOB PARAMETER** :
  - **HP (One Pole High pass)** : Sets the center frequency of the high pass filter.
  - **LP (One Pole Low pass)** : Sets the center frequency of the low pass filter.
10. **OUTPUT LIMITER** : Enable or Disable the output limiter function. This will compress the sound to prevent overloading.
11. **OVERLOAD INDICATOR** : Will light up red when the audio signal overloads. Turn the output volume down, or enable the output limiter.
12. **GLOBAL OUTPUT VOLUME** : Adjusts the overall master volume from the plugin.

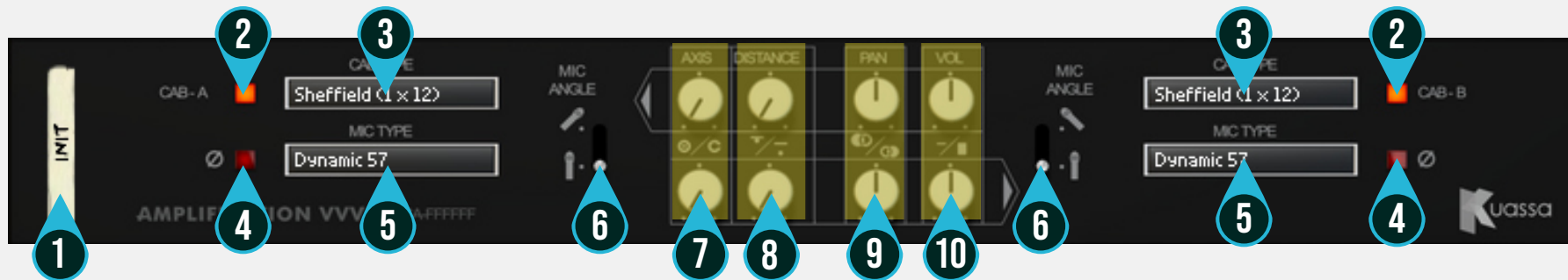
# Function



## AMP FUNCTIONS

1. **POWER** : Turns the amp On or Off. If the amp is Off, the sound will go directly to the cabinets.
2. **AMP TYPE**  
Type A, Mark I: Beautiful and rich clean channel. Tight Lead Channel with 80s flavor.  
Type B, Mark II: Thick and full midrange with tight low end that delivers the famous brown sound.  
Type C, Mark III: Deep and aggressive with monstrous gain that will please all metalheads.
3. **CHANNEL** : Select between three channels of each amp's model  
Channel 1: Clean. Inspired by the Green channel.  
Channel 2: Crunch. Inspired by the Blue channel.  
Channel 3: Lead. Inspired by the Red channel.
4. **GAIN** : Sets the input gain & the amount of distortion. Rotate clockwise for more distortion.
5. **LOW** : Adjusts the low frequency amount for the top boost channel.
6. **MID** : Adjusts the mid frequency amount for the top boost channel.
7. **HIGH** : Adjusts the high frequency amount for the top boost channel.
8. **PRESENCE** : Adjusts the presence level of the amp.
9. **RESO**: Resonance Control. Cuts low frequencies in the negative feedback loop of the power amp. Turn clockwise for beefier sound.
10. **MASTER** : Adjusts the output level from the amplifier.
11. **BIAS** : Sets the operating voltage of the tubes inside the amp.
12. **SAG** : Controls the amount of dropout/compression when a large signal and fast transient hits the power amp section

# Function



## CABINET FUNCTIONS

1. DEVICE NAME
2. CABINET ON/OFF BUTTON : Enables or disables each particular cabinet, A and B.
3. CABINET SELECTOR : Choose from 5 models of speaker cabinets.
4. PHASE BUTTON : Inverts the waveform polarity.
5. MIC SELECTOR : Provides 7 types of microphones to use.
6. MIC ANGLE : Switches between straight or angled miking.
7. MIC AXIS : Rotate clockwise to move mic position to edge of cabinet speaker, counter-clockwise to center.
8. MIC DISTANCE : Rotate clockwise to move mic position further from cabinet speaker, counter-clockwise for closer mic position.
9. CABINET PAN : Adjust the panning position of the corresponding cabinet.
10. CABINET VOLUME KNOB : Adjust the volume of the corresponding cabinet.

# Function



## BACK PANEL FUNCTIONS

1. DEVICE NAME

2. CV INPUTS :

- CV Input Socket : Receive incoming CV message for controlling each of Amplifikation VVV's CV control enabled parameters from another device's CV output.
- CV Input Trim : Turn counter-clockwise for each corresponding input to trim or reduce the intensity of incoming CV message.

3. OVERSAMPLING : Increases the internal sampling frequency to reduce aliasing artefacts at the cost of higher CPU usage.

4. Audio input and output sockets. Please note that Amplifikation VVV Extension is an "Effect" type unit, and should always be added as an Effect device instead of instrument.

## MIDI CC NAMES (RACK EXTENSION)

### INPUT

[128] = "inputVolume"

### NOISE GATE

[129] = "gateOn"  
[130] = "gateThr"  
[131] = "gateAtt"  
[132] = "gateDec"

### AMP

[133] = "ampOn"  
[134] = "ampType"  
[135] = "ampChannel"  
[136] = "ampGain"  
[137] = "ampLow"  
[138] = "ampMid"  
[139] = "ampHigh"  
[140] = "ampPresence"  
[141] = "ampResonance"  
[142] = "ampMaster"  
[143] = "ampBias"  
[144] = "ampSag"

### CAB A

[154] = "cabOnA"  
[155] = "cabTypeA"  
[156] = "micTypeA"  
[157] = "micPhaseOnA"  
[158] = "micAngledOnA"  
[159] = "micAxisA"  
[160] = "micDistanceA"  
[161] = "micPanningA"  
[162] = "micVolumeA"

### CAB B

[163] = "cabOnB"  
[164] = "cabTypeB"  
[165] = "micTypeB"  
[166] = "micPhaseOnB"  
[167] = "micAngledOnB"  
[168] = "micAxisB"  
[169] = "micDistanceB"  
[170] = "micPanningB"  
[171] = "micVolumeB"

### OUTPUT

[172] = "outputFilterOn"  
[173] = "outputHighpass"  
[174] = "outputLowpass"  
[175] = "outputVolume"  
[176] = "limiterOn"



## **Kuassa AMPLIFIKATION VVV Created by:**

**Muhammad Abduh  
Abshar Platisza  
Muhammad Yusreza Irsyan  
Intan Zariska Daniyanti  
Iman Firman Amarullah  
Juan Prahamma Hartjamt  
Dimitar Nalbantov  
Arie Ardiansyah  
Raden Pratama Kusuma  
Adhitya Sulistia Wibisana  
Bramantyo Ibrahim  
Cil Satriawan  
Grahadea Kusuf  
Iqbal Ansyori  
Rathomi Trinugraha  
Bayu Ardianto  
Sundawan Sukmaya**

## **Presets and Audio Demos by:**

**Dimitar Nalbantov (<http://www.nalbantov.com>)**



## KUASSA TEKNIKA, PT

Jl. Dipati Ukur No. 71A

Bandung 40132

West Java, INDONESIA

<https://www.kuassa.com>

General inquiry: [info@kuassa.com](mailto:info@kuassa.com)

Technical support :  
[support@kuassa.com](mailto:support@kuassa.com)



A Product of KUASSA. Bandung, West Java. Indonesia  
© 2010-2022 PT Kuassa Teknika

Kuassa and Amplifikasi VVV  
are trademarks of PT Kuassa Teknika, Indonesia.

All other commercial symbols, product and company names are  
trademarks or registered trademarks of their respective holders.

All rights reserved.