



EFEKTOR **DRIVER** BASS PREAMP







THANK YOU FOR CHOOSING KUASSA PRODUCTS!

Extended range tonal shaping Bass preamp

Inspired by a renowned bass DI unit, Efektor Bass Driver provides an extensive range of tonal shaping capabilities to satisfy your interest in low and deep sounds. Bring out vintage tube tone, glow up your slap, or just add an extra dirt without sacrificing the bottom end.

KEY FEATURES:

- NEW! Resizable window
- NEW! Updated interface for Efektor series
- Up to 8x oversampling and dry/wet knob
- Straightforward single screen interface. No hidden functionality
- Available as an Amplifikation 360 module
- Also available as a Reason Studios Rack Extension

SYSTEM REQUIREMENTS

Windows:

Windows Vista or Later (64 bit)

Core2 Duo, or AMD Phenom ii X4 or better (latest Intel i3, AMD A4, or better is recommended) with 4GB minimum RAM

VST or VST3 compatible host/DAW

Pro Tools 11 or later for AAX format

Propellerhead Reason 10.1 or later for Rack Extension format

Macintosh:

Mac OS 10.11 or later (64 Bit).

Core2 Duo, or better (latest Intel i3 recommended)

with 4GB minimum RAM

Native Apple Silicon support

VST, VST3, or Audio Units compatible host/DAW

Pro Tools 11 or later for AAX format

Propellerhead Reason 10.1 or later for Rack Extension format



Installation

MAC OSX 10.11 OR LATER

Note for MacOS X users: you will be asked for your password upon installation.

For Mac installer(.pkg) format, double-click the installer and follow the instructions. The installer automatically point to your Mac's default VST/VST3/AU/AAX plug-ins and Standalone path (see below). Alternatively you can customize the installation target to specific folder.

Here are the default folders installation path for each of our supported platforms in Mac OSX:

- Mac Audio Unit (EfektorBassDriver.component) : /Library/Audio/Plug-Ins/Components/
- Mac VST (EfektorBassDriver.vst) : /Library/Audio/Plug-Ins/VST/Kuassa/
- Mac VST3 (EfektorBassDriver.vst3) : /Library/Audio/Plug-Ins/VST3/
- Mac AAX (EfektorBassDriver.aaxplugin) : /Library/Application Support/Avid/Audio/Plug-Ins/

WINDOWS VISTA OR LATER

For Windows Installer (.exe), double-click the installer and follow the instructions. The installer automatically points to your system's default plugins path (see below). Alternatively you can point the installation target to specific folder. Most VST host already have a "Plugins" or "VSTplugins" folder inside its installation directory, or you can point the host to read any folder you choose.

Here are the default folders installation path for each of our supported platforms:

- Windows 64-bit VST (EfektorBassDriver.dll) : C:\Program Files\Steinberg\VstPlugins\Kuassa\
- Windows 64-bit VST3 (EfektorBassDriver.vst3) : C:\Program Files\Common Files\VST3\
- Windows 64-bit AAX (EfektorBassDriver.aaxplugin) : C:\Program Files\Common Files\Avid\Audio\Plug-Ins\

Uninstallation

MAC OSX 10.11 OR LATER

On a Mac, simply delete the plug-in located on the corresponding Plug-ins folder, and delete other folders and file resources located at,

Folders:

- /Library/Application Support/Kuassa/Default Presets/EfektorBassDriver/
- /Users/[User Name]/Music/Kuassa/Presets/EfektorBassDriver/

Files:

- /Library/Application Support/Kuassa/Misc/EfektorBassDriver EULA.txt
- /Library/Application Support/Kuassa/User Manuals/EfektorBassDriver.pdf
- /Users/[User Name]/Music/Kuassa/Settings/EfektorBassDriver.setting

WINDOWS VISTA OR LATER

Use “Add/Remove programs” or “Programs and Features” from the Windows Control Panel. If Efektor Bass Driver does not listed, delete the .dll/.vst3/.aaxplugin file from your VST plug-in folder. After Uninstallation, manually delete other Efektor Bass Driver file resources at, Folder:

- C:\Users\[User Name]\Documents\Kuassa\Presets\EfektorBassDriver\

Files:

- C:\Users\[User Name]\Documents\Kuassa\Settings\EfektorBassDriver.setting

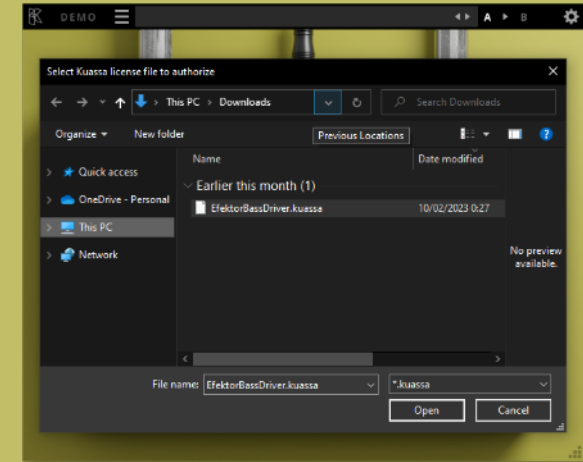
Authorization



1 On evaluation mode, you will see this pop-up window when you first start the plugin.

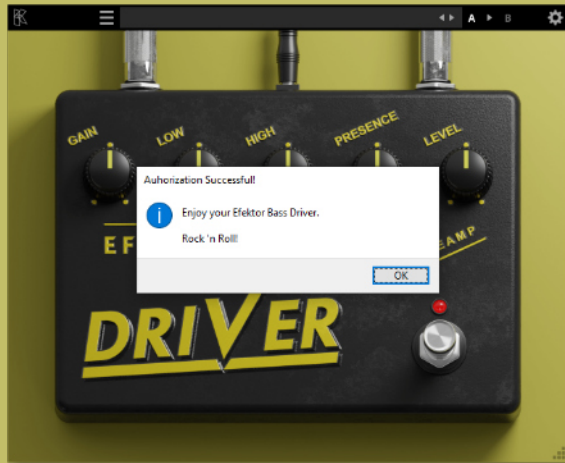


2 To start the authorization process, click the [File] button on the top-left of the plug-in's interface, there, you will find a selection box titled [import License].



3 Locate the License File [EfektorBassDriver.kuassa] obtained from the confirmation e-mail sent to you after you purchase EFEKTOR Plug-in(s) from our web store or downloaded from member area. Note that the License File contains your personal information used to authorize the plug-in.

Authorization (Cont'd)

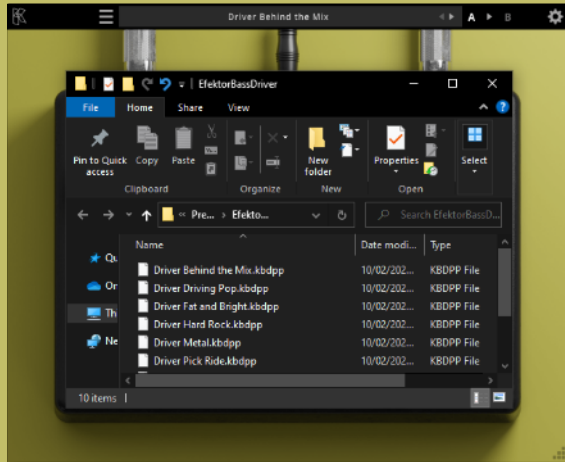


4 After you locate the License File, a pop-up box confirming that you are successfully authorize your plug-in will show.



5 To check if you have completed the authorization process, just simply load the About Box by clicking the Kuassa logo on the top left corner. If your authorization is successful, either your name or your e-mail address will be shown on the About Box. You will also notice that the generated noise/silence on the Evaluation Version is now gone.

Preset Management



1 Presets for EfektorBassDriver Plug-in(s) are located in the following folders*:

- Mac:
/Users/[USERNAME]/Music/Kuassa/Presets/EfektorBassDriver
- Win:
~\Documents\Kuassa\Presets\EfektorBassDriver

All presets inside these folders will be recognized by the plugin as individual presets, you can also create a folder to group the preset(s). They will thus be shown on the EfektorBassDriver Plug-in's preset selector.



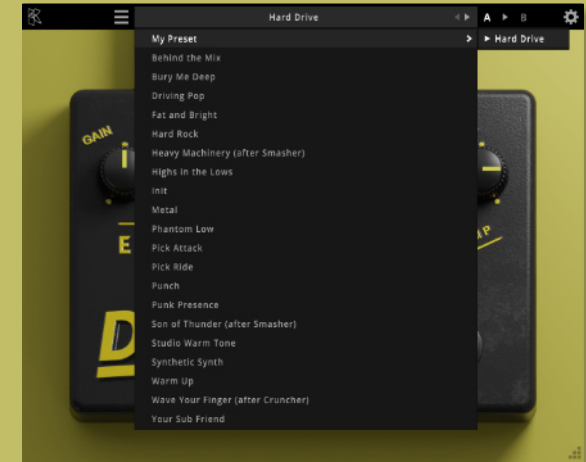
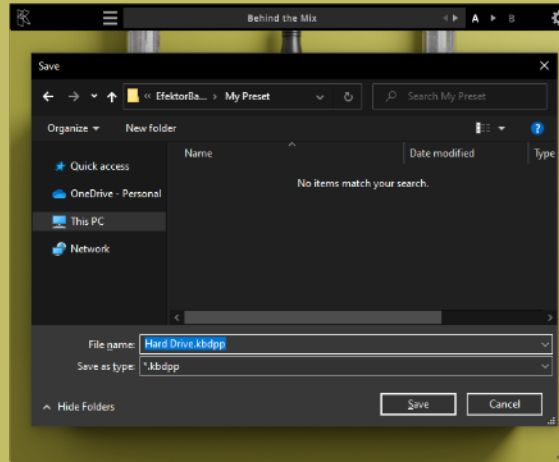
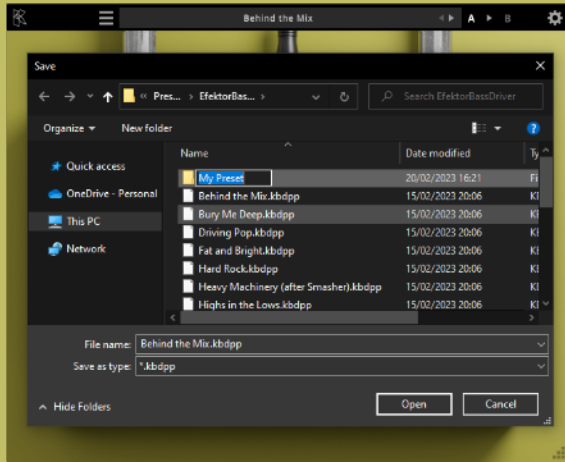
2 To save a preset, set your plugin to the desired parameter settings, then select:

- “Save Preset”: Overwrites currently active preset.
- “Save Preset As”: Saves current settings into a new preset file (*.kbdpp for Efektor Bass Driver).



3 When you create a new preset using “Save Preset As...”, make sure that you have chosen the correct preset folder as aforementioned on point 1 above to make sure that it will be recognized automatically by Efektor Bass Driver.

Preset Management



4 Sub-folders are also recognized to manage presets into groups, useful to manage additional preset bank, or grouping presets based by their use.

Function



- 1 KUASSA LOGO: Displays the About box.
- 2 [FILE] BUTTON: The Menu button contains several functions; preset saving, and shortcuts to the user manual and Kuassa website.
- 3 PRESET SELECTOR: Select from available Presets, press left-right buttons or select from drop down menu.
- 4 A-B COMPARE: Compares two different settings of the effect.
- 5 SETTING ICON: Show or hide the top menu consisting of align, pan, and link options.
- 6 INPUT: Adjusts the signal level going into the plugin
- 7 OVERSAMPLING SELECTOR: Select from no oversampling up to 8X oversampling
- 8 DRY/WET: Mixes the original with the processed signal
- 9 GAIN: Adjusts the amount of saturation
- 10 LOW: Adjusts the low frequency range, centered around 65 Hz
- 11 HIGH: Adjust the middle frequency range, centered around 2500 Hz
- 12 PRESENCE: Adjusts overall brightness and harmonics.
- 13 LEVEL: Adjusts the output level
- 14 BYPASS SWITCH: Turns the effect on or off



Function



FRONT PANEL FUNCTIONS

1. **PLUGIN BYPASS BUTTON:** Turns on, off or bypass the rack extension device..
2. **INPUT:** Adjusts the signal level going into the plugin.
3. **GAIN:** Adjusts the amount of saturation.
4. **LOW:** Adjusts the low frequency range, centered around 65 Hz.
5. **HIGH:** Adjusts the high frequency range, centered around 2500 Hz.
6. **PRESENCE:** Adjusts overall brightness and harmonics.
7. **LEVEL:** Adjusts the output level.
8. **DRY/WET:** Mixes the original with the processed signal.
9. **PRESET BROWSER.**
10. **PRESET NAME DISPLAY.**
11. **BYPASS BUTTON:** Turns the effect on or off.

Function



BACK PANEL FUNCTIONS

1. CV INPUTS :

- CV Input Socket : Receive incoming CV message for controlling each of Efektor Bass Driver's CV control enabled parameters from another device's CV output.
- CV Input Trim : Turn counter-clockwise for each corresponding input to trim or reduce the intensity of incoming CV message.

2. DEVICE NAME.

3. Audio input and output sockets. Please note that Efektor Bass Driver Extension is an "Effect" type unit, and should always be added as an Effect device instead of instrument.

MIDI CC

- [128] = "onBypass"
- [129] = "inputVol"
- [130] = "gain"
- [131] = "low"
- [132] = "high"
- [133] = "presence"
- [134] = "level"
- [135] = "dryWet"

Kuassa Efektor Bass Driver Created by:

**Muhammad Abduh
Abshar Platisza
Muhammad Yusreza Irsyan
Intan Zariska Daniyanti
Iman Firman Amarullah
Juan Prahamma Hartjamt
Dimitar Nalbantov
Arie Ardiansyah
Raden Pratama Kusuma
Adhitya Sulistia Wibisana
Bramantyo Ibrahim
Cil Satriawan
Grahadea Kusuf
Iqbal Ansyori
Rathomi Trinugraha
Bayu Ardianto
Sundawan Sukmaya**

Presets and Audio Demos by:

Dimitar Nalbantov (<http://www.nalbantov.com>)



KUASSA TEKNIKA, PT

Jl. Dipati Ukur No. 71A

Bandung 40132

West Java, INDONESIA

<https://www.kuassa.com>

General inquiry: info@kuassa.com

TECHNICAL SUPPORT :

support@kuassa.com



A Product of KUASSA. Bandung, West Java. Indonesia
© 2010-2023 PT Kuassa Teknika

Kuassa and Efektor Bass Driver are trademarks of PT Kuassa Teknika, Indonesia.

All other commercial symbols, product and company names are trademarks or registered trademarks of their respective holders.

All rights reserved.